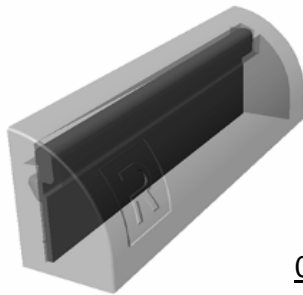


600Pa Lösung bei Concept Patio 96 Monorailrahmen

Wir haben für unseren CP 96 Monorailrahmen 006.0521.XX eine 600Pa Schlagregendichtheit – Lösung erarbeitet. Im diesen Zuge wurde auch eine weitere Entwässerungskappe 069.6830.04 entwickelt. Diese ist im inneren mit einer Ventilklappe versehen. Die Entwässerungskappe kann auch bei unseren anderen Systemen eingesetzt werden.

Neue Entwässerungskappe:



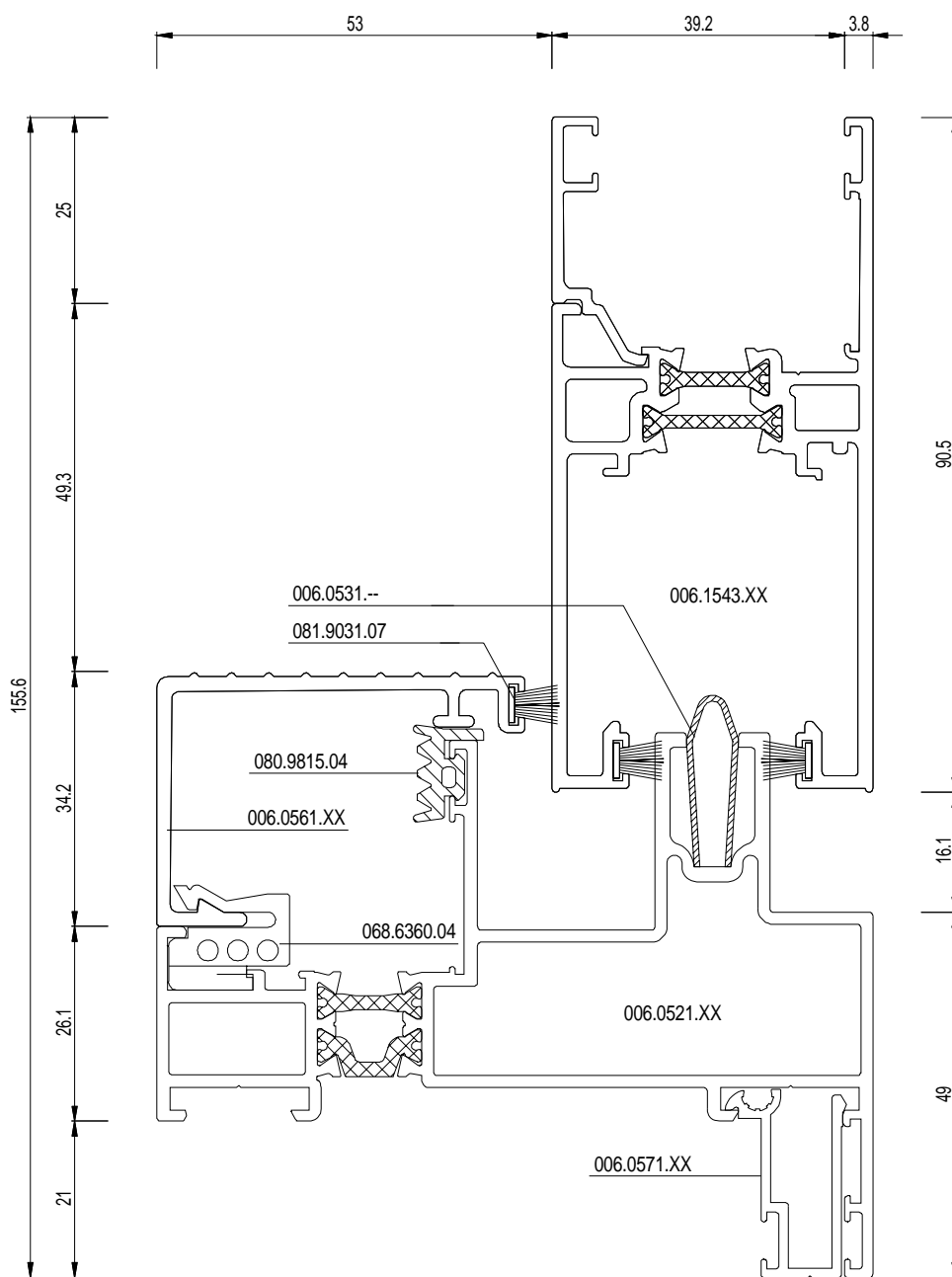
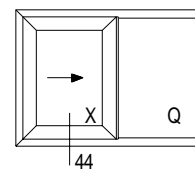
069.6830.04

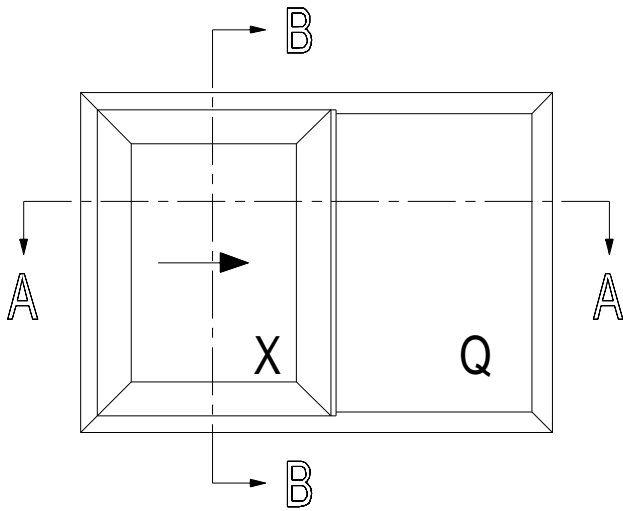
Prinzip:



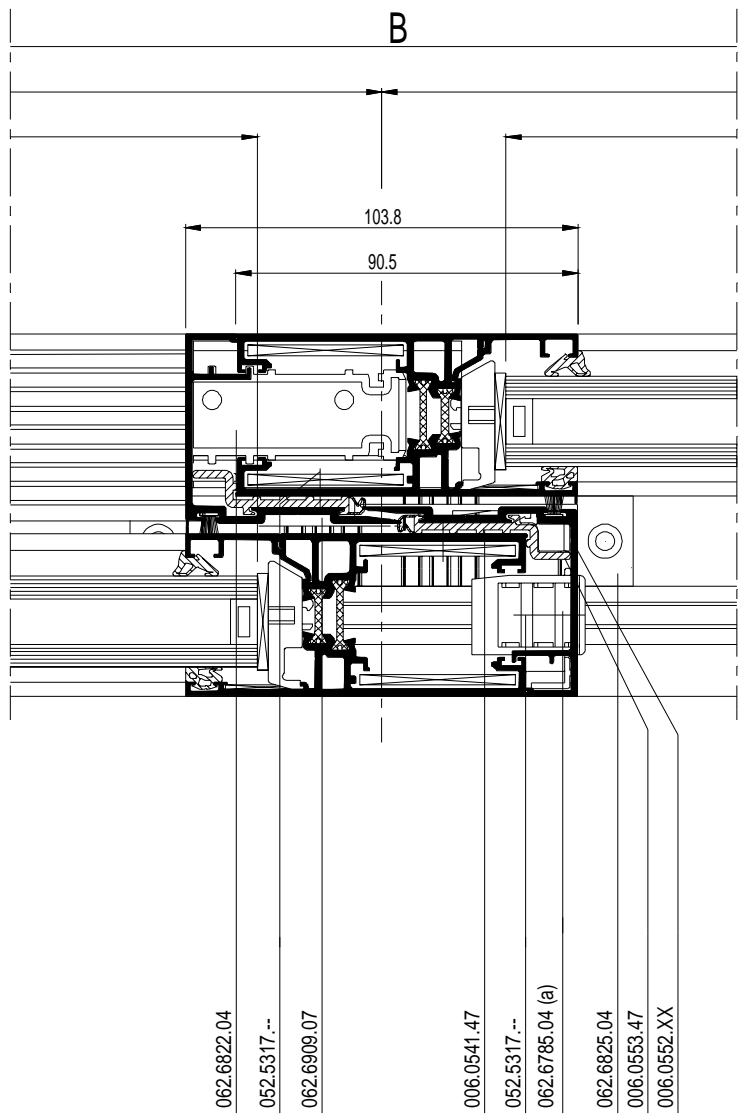
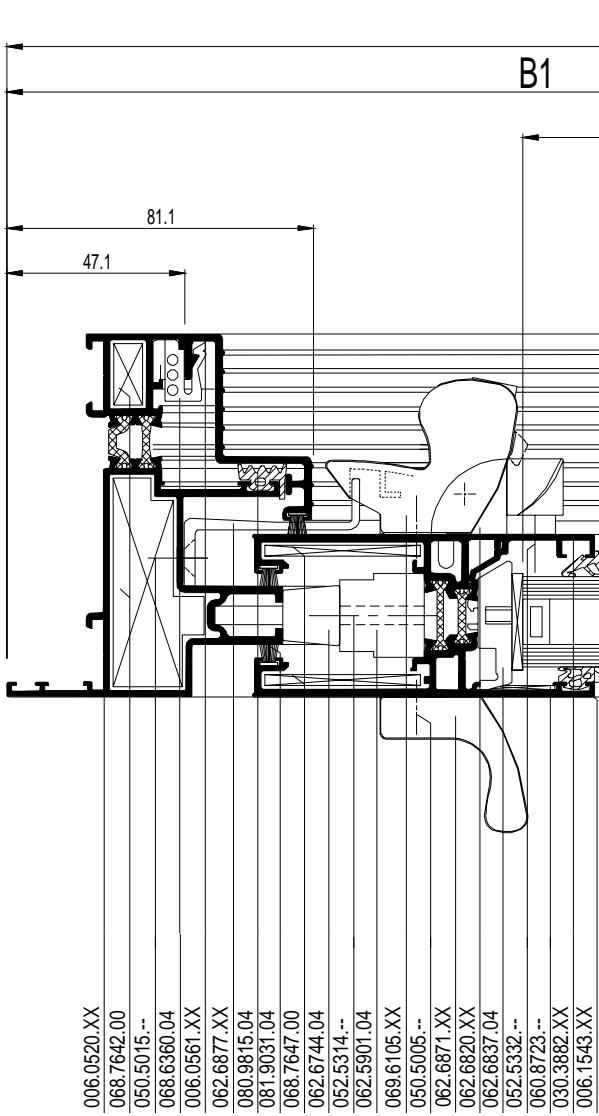
Ventilklappe

Die entsprechenden Katalogseiten zu CP 96 Monorailrahmen 600Pa entnehmen Sie bitte dem Anhang.





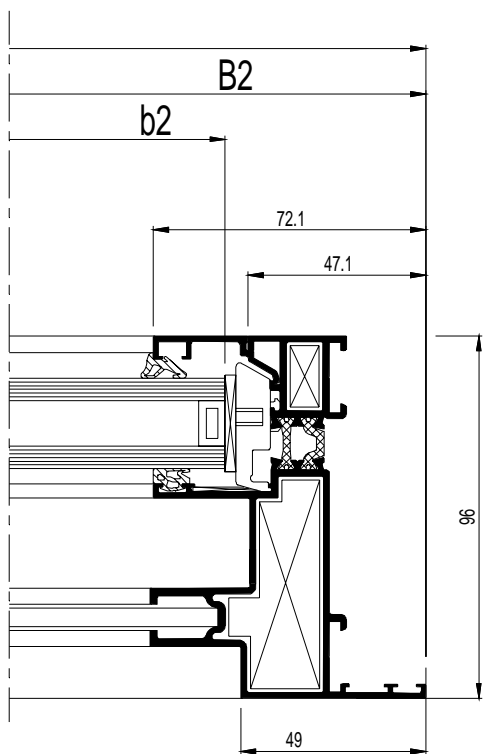
L_m
b1=B1-169.5
b2=B2-86
h1=H-273
h2=H-106



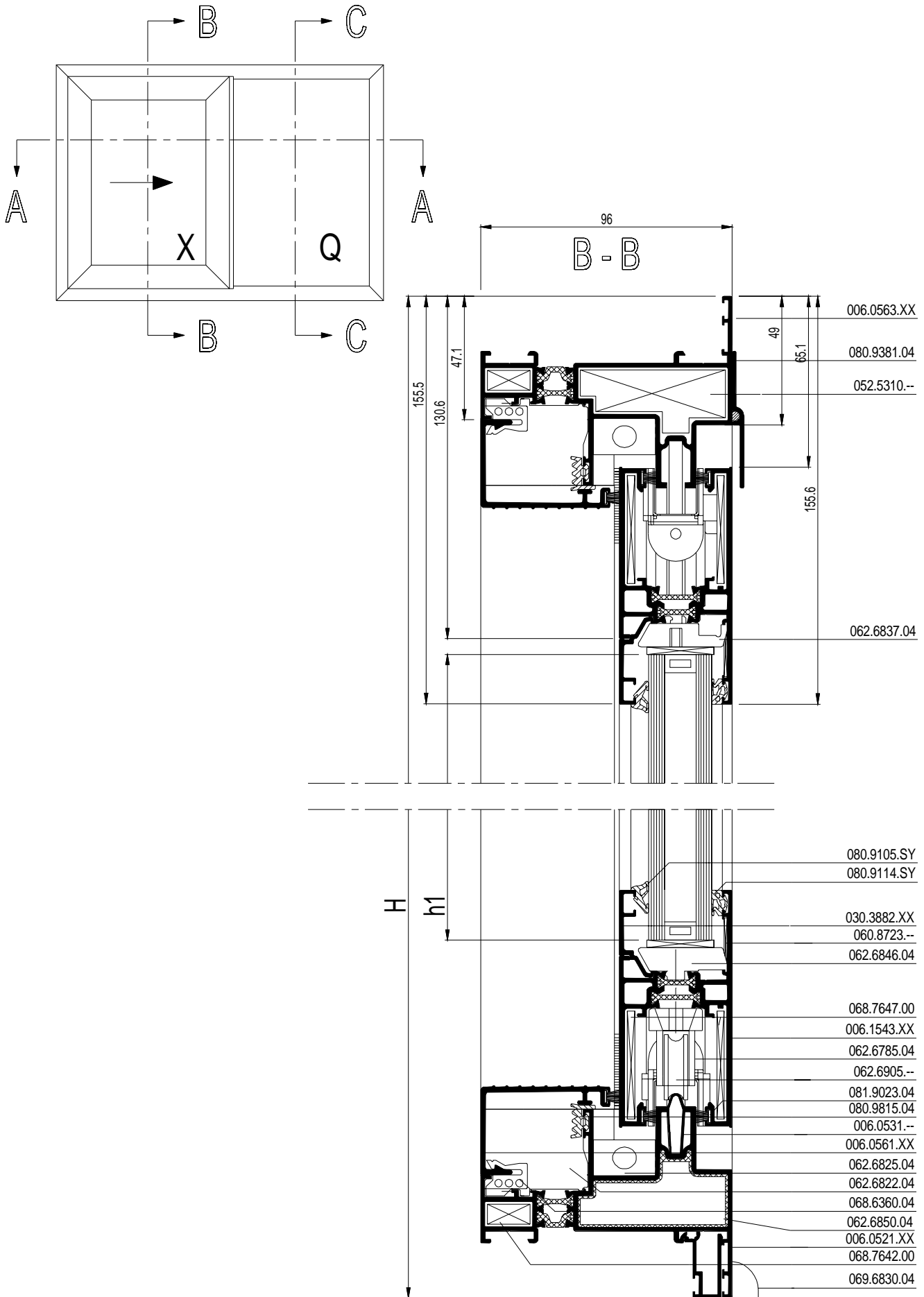
- 006.0520.XX
- 068.7642.00
- 050.5015.-
- 068.6360.04
- 006.0561.XX
- 062.6877.XX
- 080.9815.04
- 081.9031.04
- 068.7647.00
- 062.6744.04
- 052.5314.-
- 062.5901.04
- 069.6105.XX
- 050.5005.-
- 062.6871.XX
- 062.6820.XX
- 062.6837.04
- 052.5332.-
- 060.8723.-
- 030.3882.XX
- 006.1543.XX

- 062.6822.04
- 052.5317.-
- 062.6909.07
- 006.0541.47
- 052.5317.-
- 062.6785.04 (a)
- 062.6825.04
- 006.0553.47
- 006.0552.XX

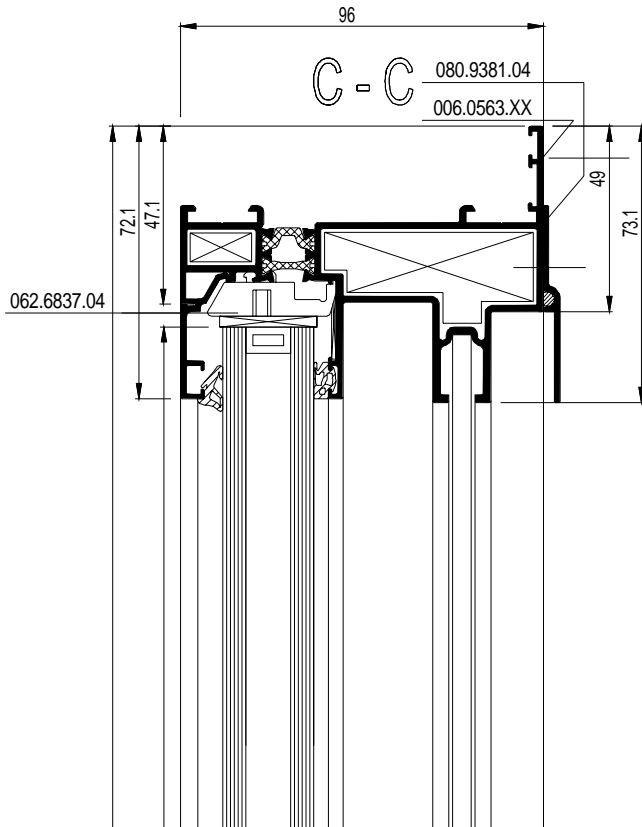
VLEUGELGEWICHT
 POIDS VANTAIL Max. 160 kg = 062.6905.--
 WEIGHT OF THE VENT Max. 200 kg = 062.6906.--
 FLUEGELGEWICHT



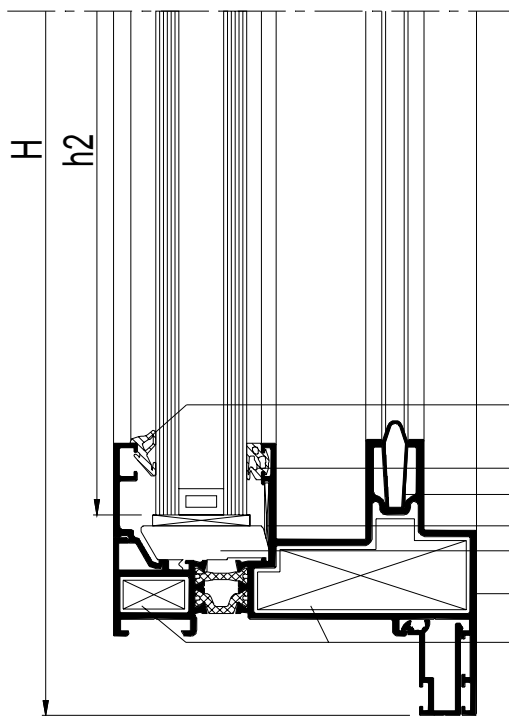
			#	
	068.7642.00		4	38.G...
	068.7647.00		4	38.G...
	060.8723.--		8	38.G...
	062.6822.04		1	38.G...
	053.5412.--		6	38.G...
(a)	062.6785.04		1	38.G...
(b)	062.6805.04 <small>OF-OU-OR-ODER</small>		1	38.G...
	052.5317.--		2	38.G...
	071.6554.04		2	38.G...
	062.6905.--		1	38.G...
	030.3411.--		4	38.G...
	069.6105.XX		1	38.G...
	062.6871.XX		1	38.G...
	050.5005.--		2	38.G...
	062.6877.XX		1	38.G...
	050.5015.--		2	38.G...
	062.6837.04		6	38.G...
	062.6846.04		4	38.G...
	062.5901.04		1	38.G...
	062.6744.04		1	38.G...
	052.5314.--		1	38.G...
	062.6820.XX		1	38.G...
	052.5332.--		1	38.G...
	062.6819.04		38.F...	38.G...
	081.9031.104		Hx5+B1x6	38.G...
	062.6825.04		1	38.G...
	052.5332.--		4	38.G...
	068.6360.04		1/300mm	38.G...
	080.9815.04		H1+B1x2	38.G...
	080.9105.SY		h1x2+h2x2+ b1x2+b2x2	38.G...
	080.9114.SY		h1x2+h2x2+ b1x2+b2x2	38.G...
	052.5317.--		38.F...	38.G...
	069.6830.04		--	38.G...
	062.6850.04		1	38.G...
	080.9381.04		2xB	38.G...



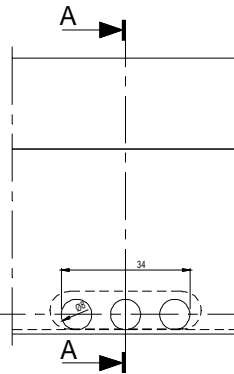
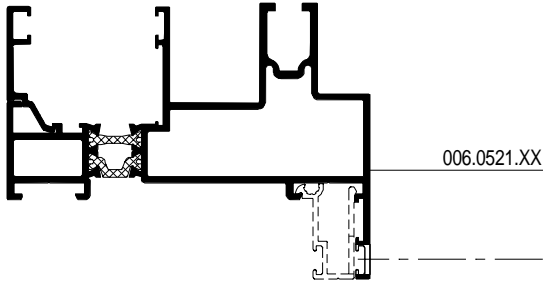
D0066051



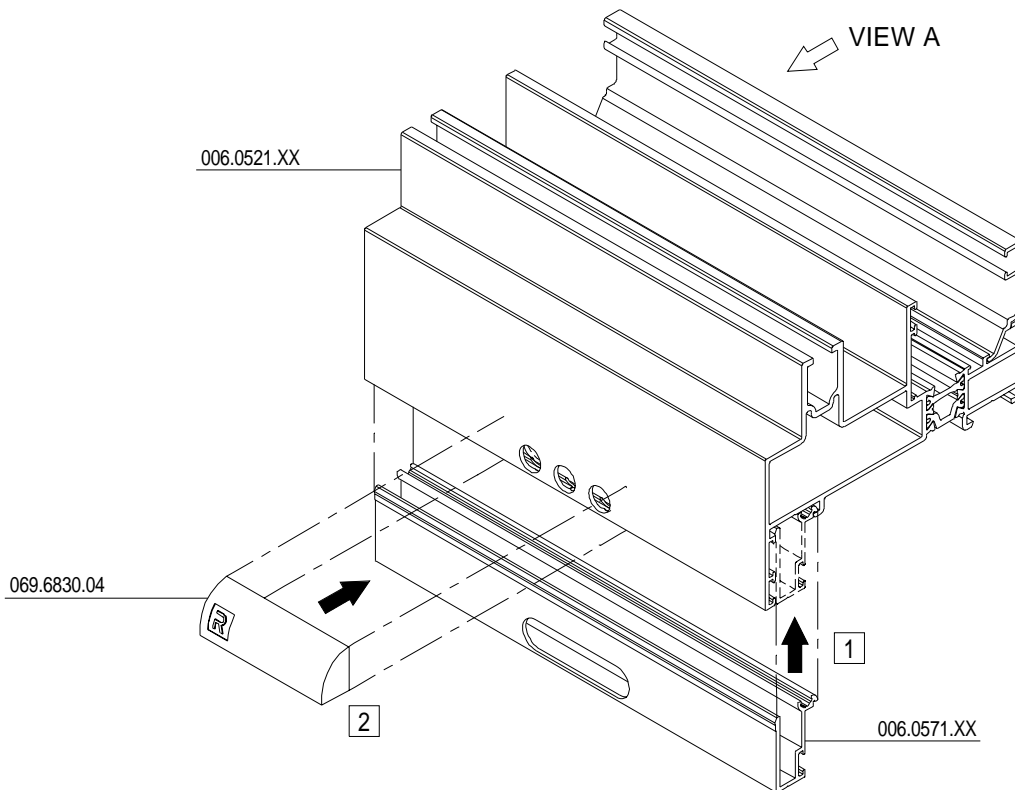
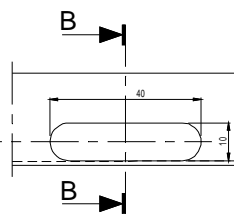
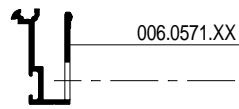
			#	L_m	
006.0521.XX			2	B	38.C....
			2	H	
006.0561.XX			1	B1-99	38.C....
			1	B1-99	
006.0565.XX			1	H1-162	38.C....
006.1543.XX			1	H-94	38.C....
			2	B1-26.5	
			2	H-130	
006.0552.XX			1	H-171= (062.6785.04)	38.C....
006.0552.XX			1	H-144	38.C....
030.3882.XX			2	B2-74	38.C....
			2	H-144	
			2	B1-157.5	
			2	H-311	
006.0553.47			1	H-131	38.C....
			1	H-144	
006.0531.--			2	B-116	38.C....
006.0571.XX			1	B	38D.G.004
006.0563.XX			1	B	38.C....



Section A-A



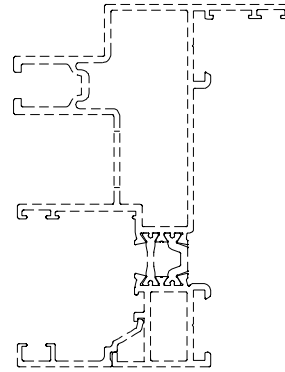
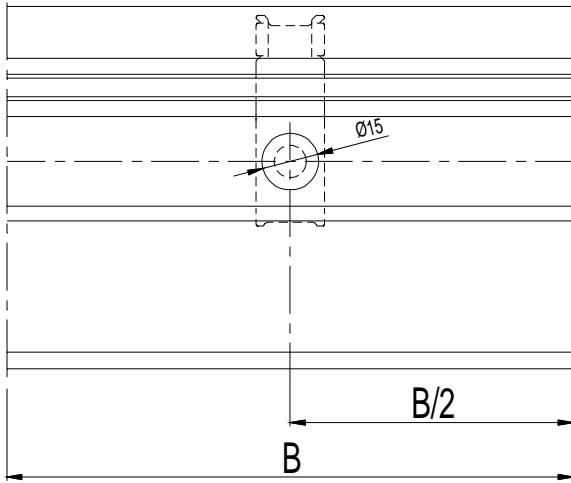
Section B-B



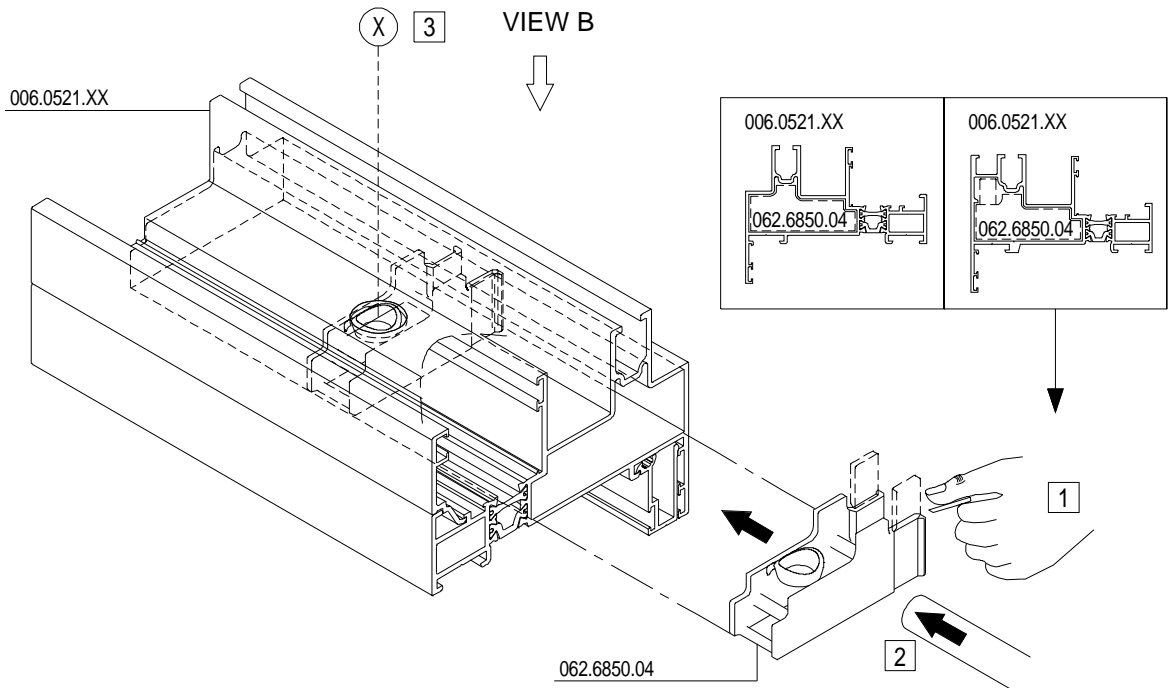
MONTAGEVOLGORDE	1	2	3	.
L'ORDRE DE MONTAGE	1	2	3	.
THE ORDER OF ASSEMBLY	1	2	3	.
MONTAGEREIHENFOLGE	1	2	3	.

D0066060

VIEW B



VIEW A

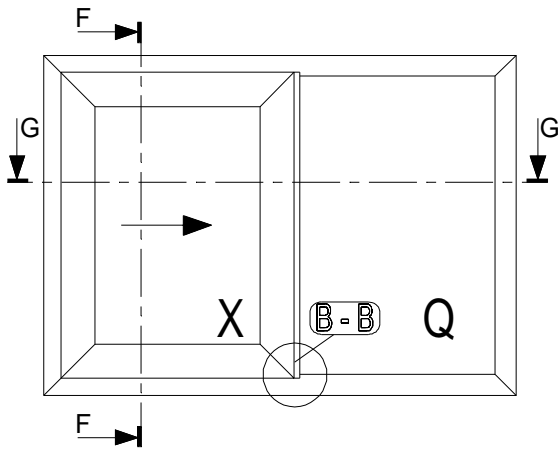


MONTAGEVOLGORDE
 L'ORDRE DE MONTAGE
 THE ORDER OF ASSEMBLY
 MONTAGEREIHENFOLGE

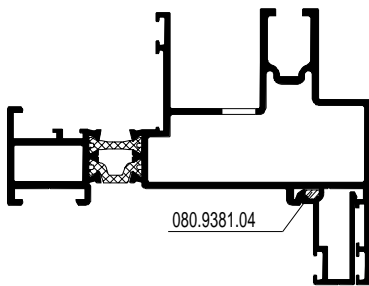
1	2	3	.
---	---	---	---

DICHTINGSMIDDEL
 MATIERE D'ETANCHEITE
 SEALING AGENT
 ABDICHTUNG

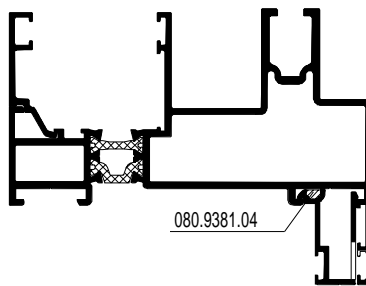
(X)



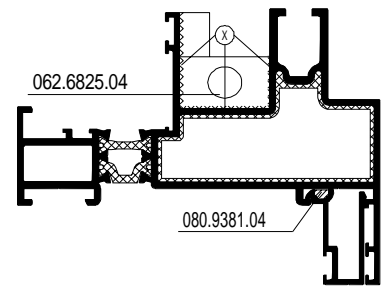
Section A-A



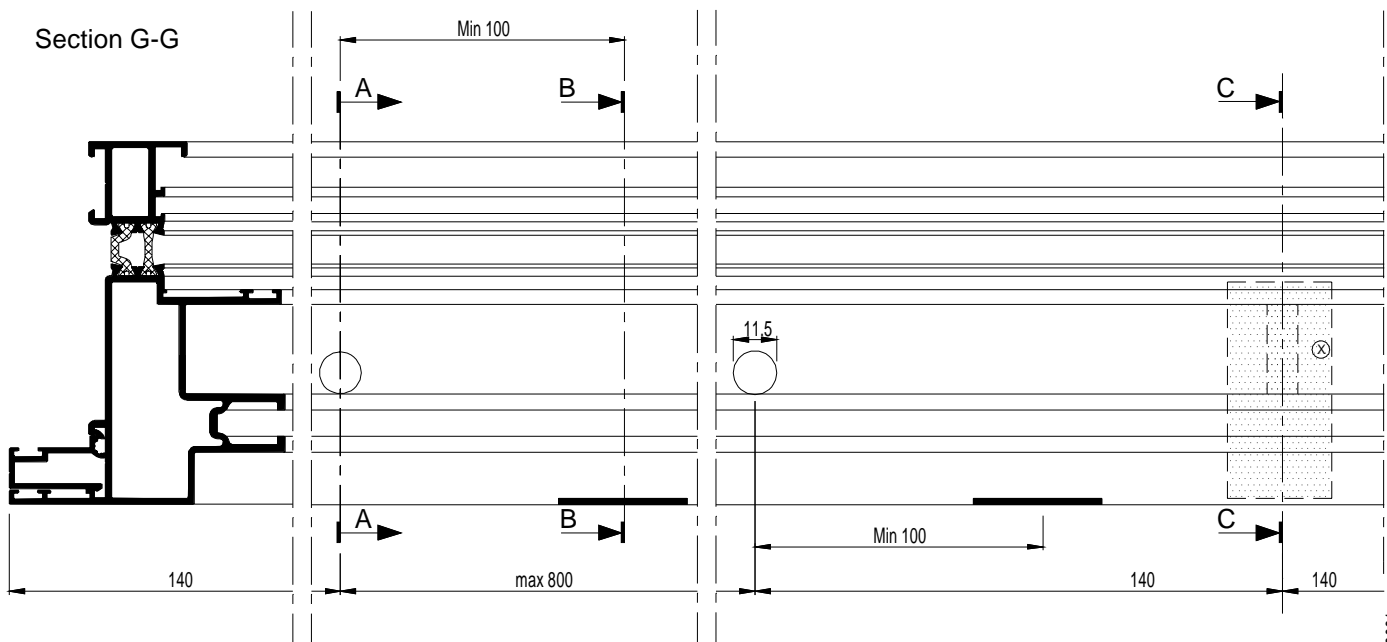
Section B-B



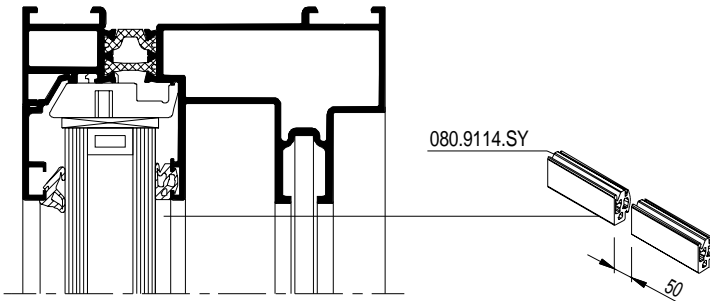
Section C-C



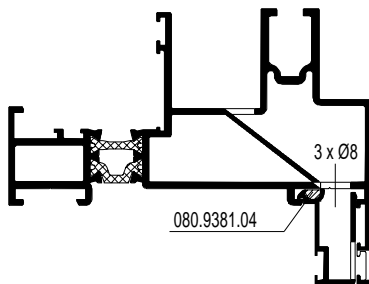
Section G-G



Section F-F



Section D-D



Section E-E

