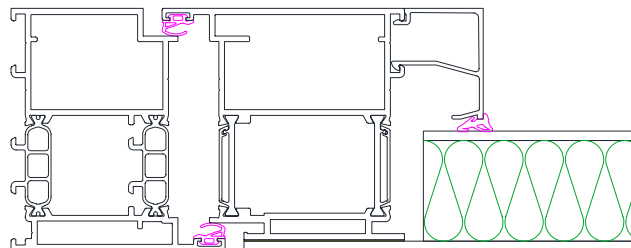


CS 86-HI Türen für flügelüberdeckende Füllungen

Die letztes Jahr noch als OS-Lösungen verfügbaren Profile für CS 86-HI Türen für flügelüberdeckende Füllungen, vorgestellt auf der BAU 2011, sind jetzt ins Standard Liefersortiment aufgenommen worden.



Mit den neuen Flügelprofilen können einflügelige nach innen oder nach außen öffnende Türen hergestellt werden.

Passend zu den Profilen wurden neue Eckwinkel (Außenhalbschale) und eine neue Anschlagdichtung (für nach außen öffnende Türen) ins Liefersortiment aufgenommen.

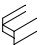
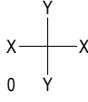
Alle weiteren Zubehör- und Beschlagsteile entsprechen denen einer normal verglasten CS 86-HI Tür. Auch die Bearbeitungen z.B. für die Eckwinkel sind identisch.

Schwellenvarianten können mit Bürstendichtung, mit automatischer Türdichtung und mit umlaufender Anschlagdichtung ausgeführt werden.

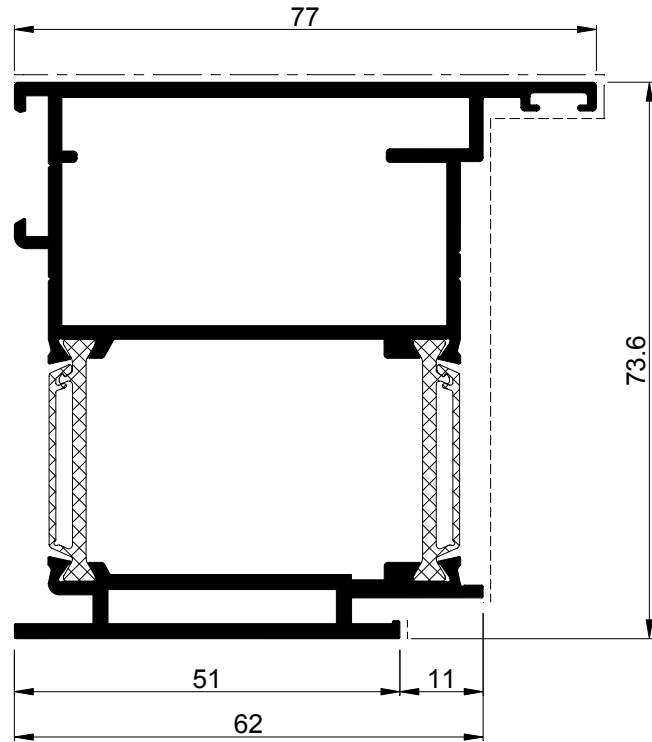
Sämtliche Daten zu den Türen für flügelüberdeckende Füllungen sind in ReynaPro hinterlegt.

Im Anhang finden Sie die entsprechenden Profildaten mit Verarbeitungszeichnungen. Neben den hier gemachten Angaben gelten die Verarbeitungsvorschriften aus dem Standard CS 86-HI Katalog (089.C19C.00 - Edition 03/2009).

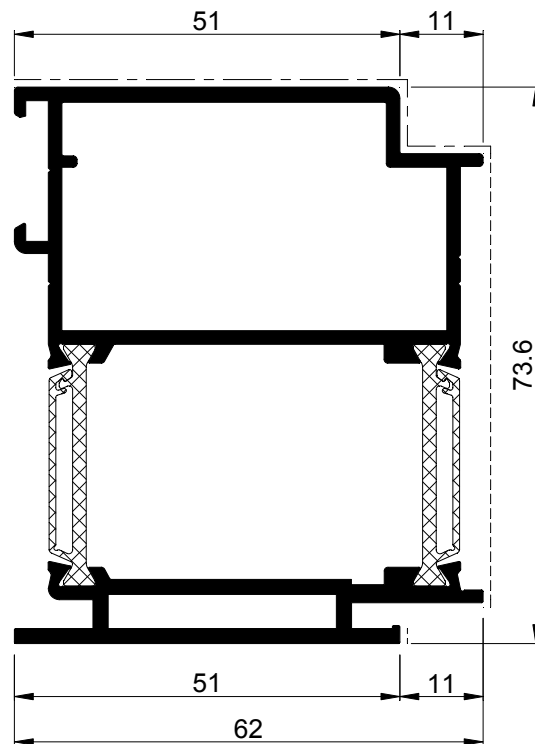
Für die Herstellung einer Tür mit WK2 Anforderung sind zusätzlich die Angaben aus unserem Prüfzeugnis zu beachten. Außerdem muss eine dem Prüfzeugnis entsprechende Türfüllung verwendet werden.







	A dm ² /m	P dm ² /m	L_m	I_x cm ⁴	W_x cm ³	a_x mm	I_y cm ⁴	W_y cm ³	a_y mm	
108.0314.XX	27.68	8.3	7.00	28.331	7.263	34.59	23.336	7.353	30.27	X Y 0
108.0326.XX	31.94	9.3	7.00	32.616	8.679	37.58	29.985	6.835	33.14	







108.0326.XX

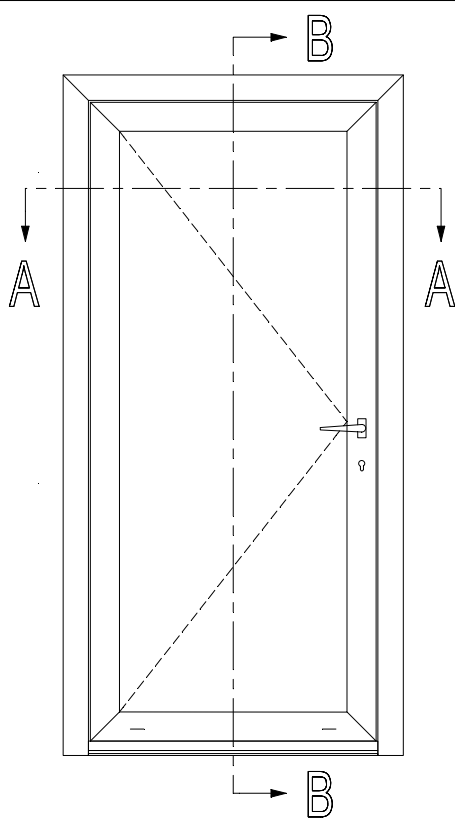


108.0314.XX



	108.0326.XX	
	068.7798.00	095.H800.00
	021.5830.00	of-ou-or-oder 095.B500.00
	068.8818.00	097.P300.00
	021.5830.00	

	108.0314.XX	
	068.7798.00	095.H800.00
	021.5830.00	of-ou-or-oder 095.B500.00
	068.8818.00	097.P300.00
	021.5830.00	097.0660.00



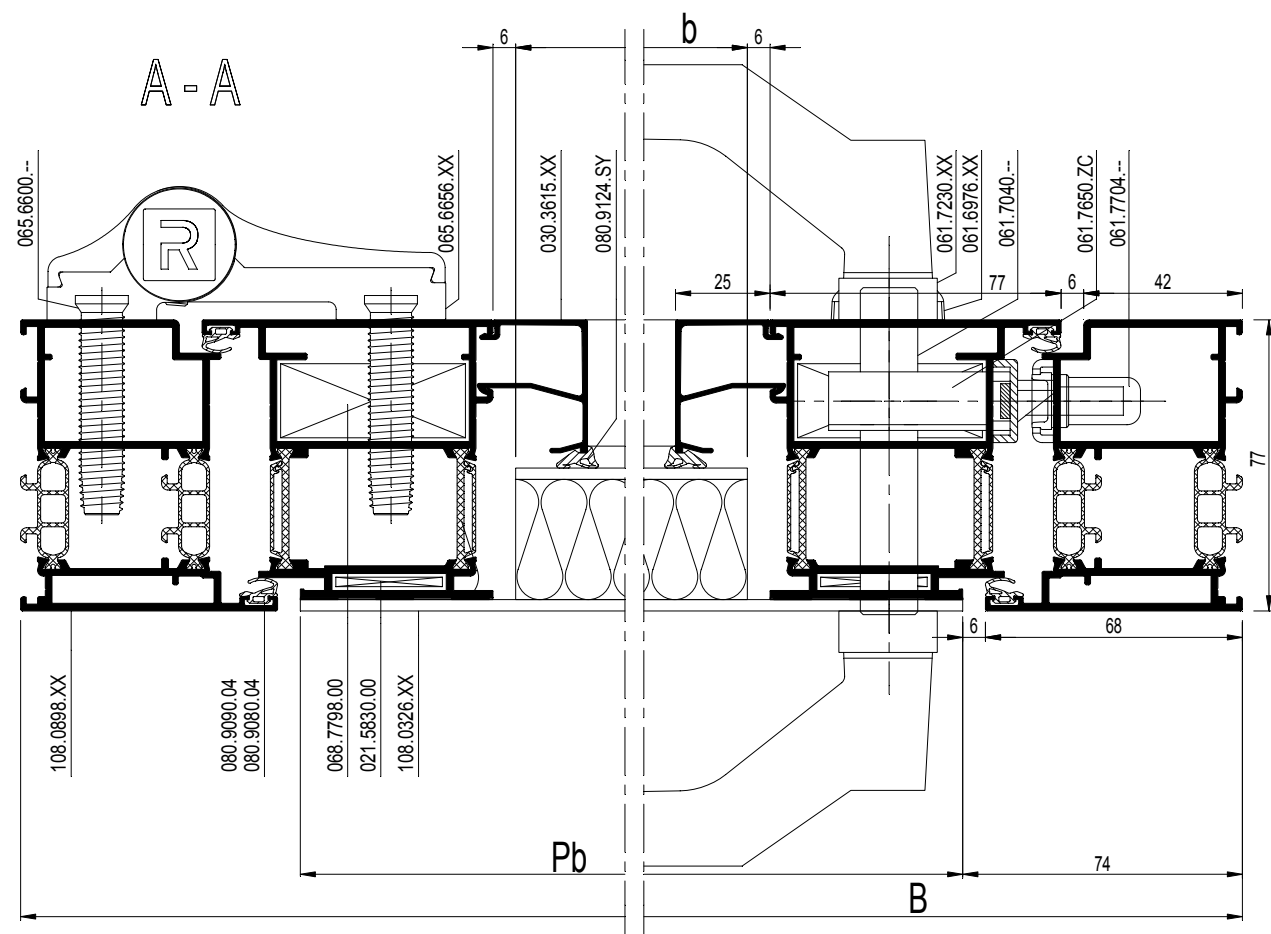
Part	Symbol	Quantity	Material	Reference
108.0898.XX	[Symbol]	1	B	19.C. ...
	[Symbol]	1	H	
	[Symbol]	1	H	
108.0326.XX	[Symbol]	2	B - 96	19.C. ...
	[Symbol]	2	H - 58	
030.3615.XX	[Symbol]	2	B - 250	19.C. ...
	[Symbol]	2	H - 262	
108.0080.XX	[Symbol]	1	B - 148	19.C. ...
108.0873.XX	[Symbol]	1	B - 142	19.C. ...

INT.

[Symbol]	b = B - 262
[Symbol]	h = H - 224

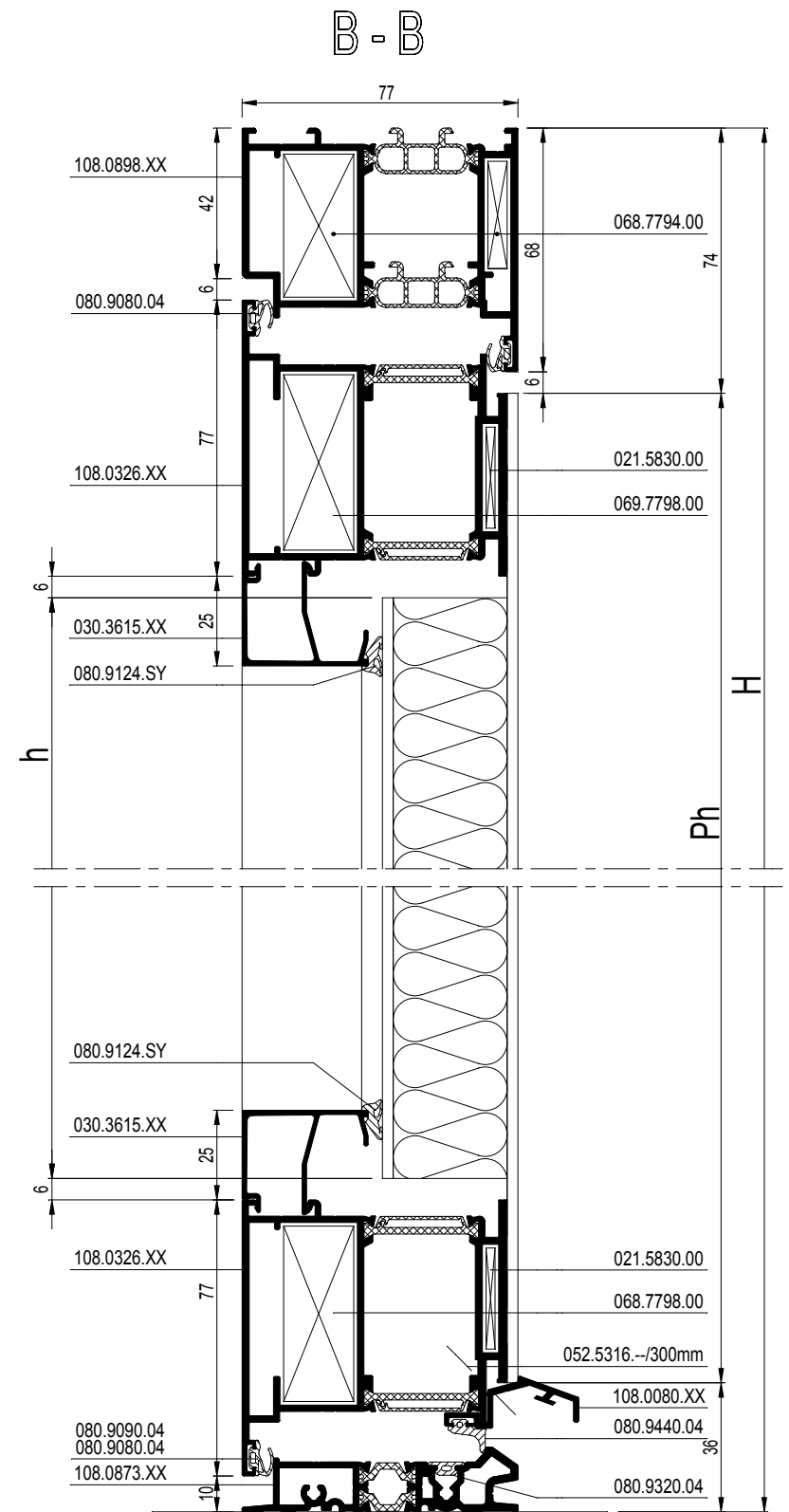
EXT.

[Symbol]	Pb = B - 148
[Symbol]	Ph = H - 110

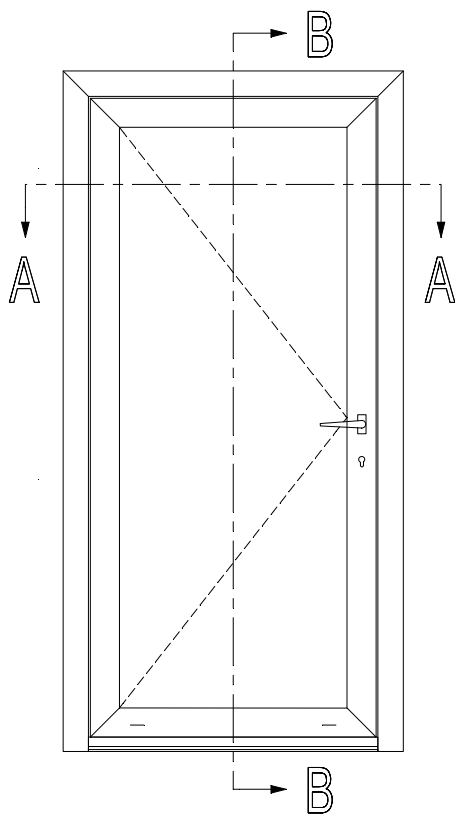


schaal - échelle
scale - Maßstab
1/2
D0083950

Part	Symbol	Quantity	Material
068.7794.00	[Symbol]	2	19.G. ...
068.7798.00	[Symbol]	4	19.G. ...
021.5830.00	[Symbol]	4	19.G. ...
065.6656.XX	[Symbol]	19.F. ...	ACCESS CS
061.7230.XX	[Symbol]	1	ACCESS CS
050.5161.--	[Symbol]	4	ACCESS CS
061.7650.ZC	[Symbol]	1	19.G. ...
052.5316.--	[Symbol]	2	ACCESS CS
061.7704.--	[Symbol]	1	19.G.016
052.5316.--	[Symbol]	3	ACCESS CS
061.7040.--	[Symbol]	1	ACCESS CS
061.6976.XX	[Symbol]	1	ACCESS CS
069.8500.04	[Symbol]	1	19.G. ...
052.5313.--	[Symbol]	4	ACCESS CS
052.5316.--	[Symbol]	4	ACCESS CS
069.8509.04	[Symbol]	1	19.G. ...
080.9080.04	[Symbol]	3xB + 4xH	19.G. ...
081.9092.04	[Symbol]	8 x (60 mm)	ACCESS CS
080.9124.SY	[Symbol]	2xb + 2xh	ACCESS CS
052.5316.--	[Symbol]	1/300mm	ACCESS CS
080.9320.04	[Symbol]	B	19.G. ...
080.9440.04	[Symbol]	B - 124	19.G. ...
065.6600.--	[Symbol]	19.F. ...	ACCESS CS



schaal - échelle
scale - Maßstab
1/2
D0083950



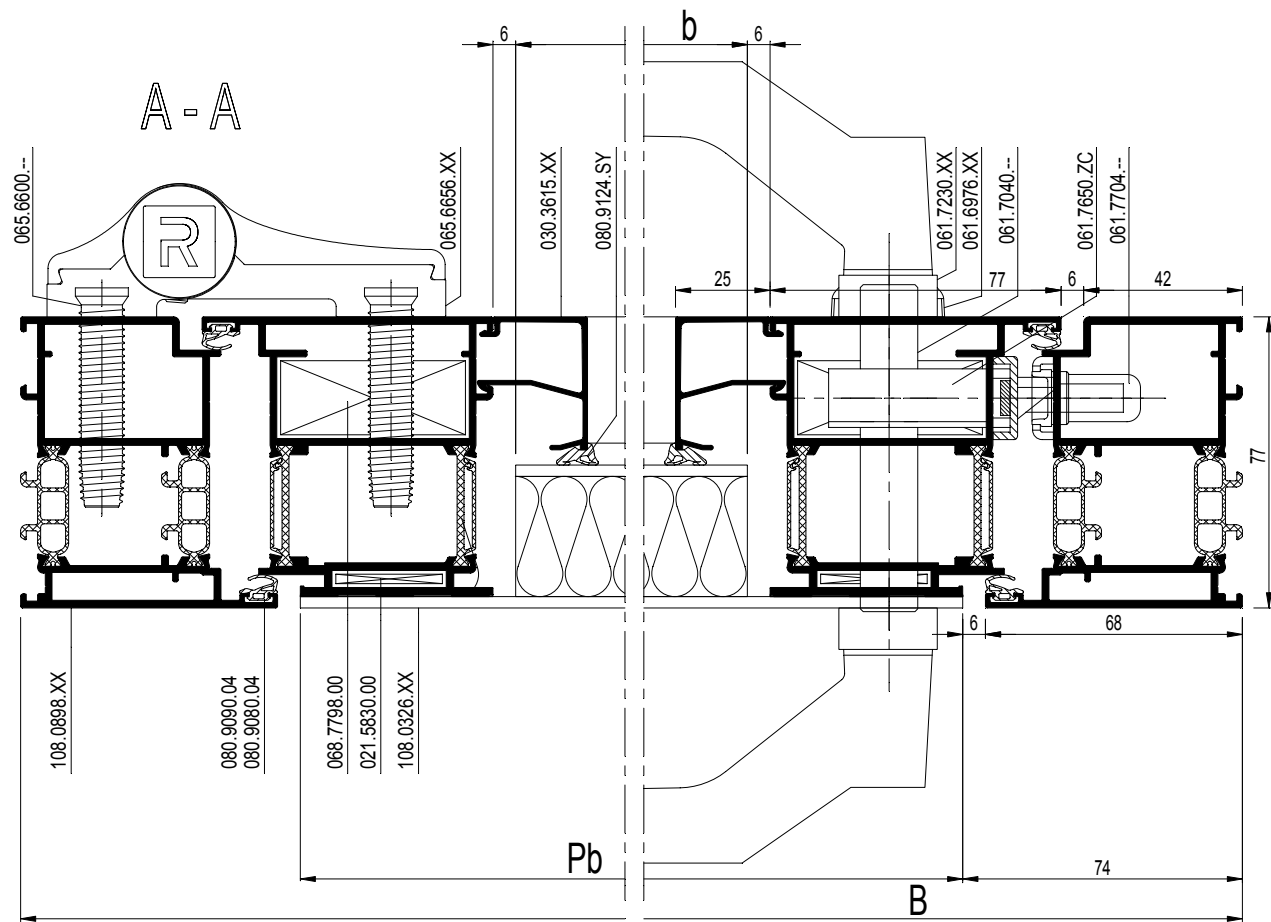
			#	L_m	
108.0898.XX			1	B	19.C. ...
			1	H	
			1	H	
108.0326.XX			2	B - 96	19.C. ...
			2	H - 58	
030.3615.XX			2	B - 250	19.C. ...
			2	H - 262	
108.0071.XX			1	B - 118	19.C. ...

INT.

	b = B - 262
	h = H - 224

EXT.

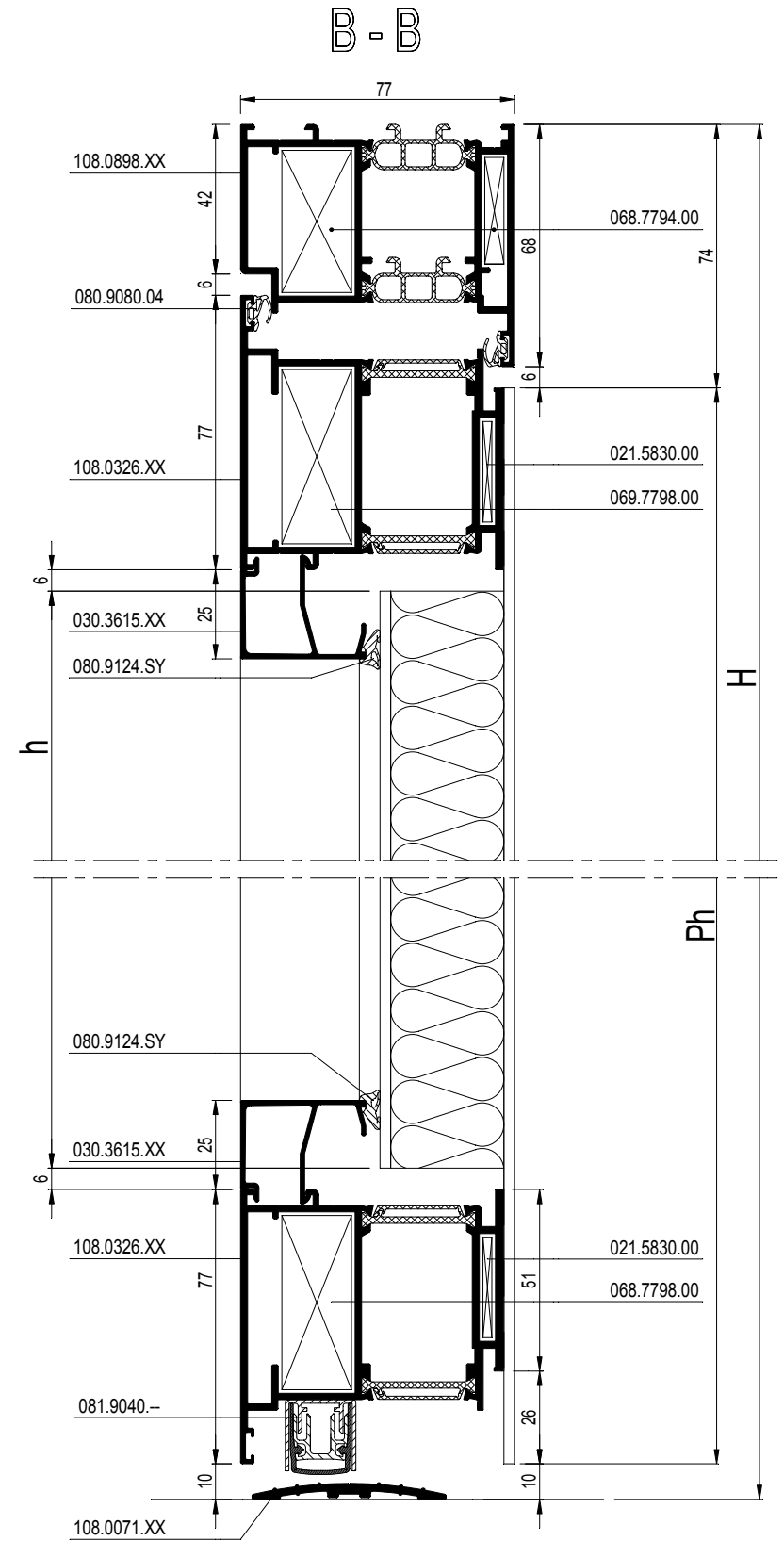
	Pb = B - 148
	Ph = H - 84



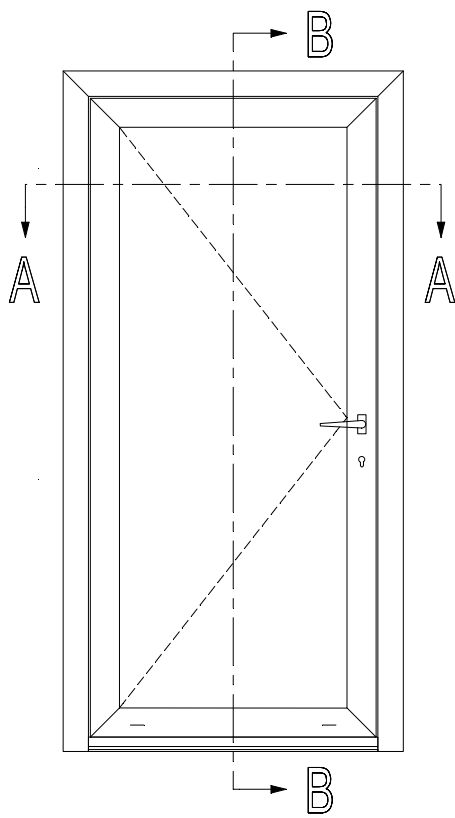
schaal - échelle
scale - Maßstab
1/2
D0083951

		#	
068.7794.00		2	19.G. ...
068.7798.00		4	19.G. ...
021.5830.00		4	19.G. ...
065.6656.XX		19.F. ...	ACCESS CS
061.7230.XX		1	ACCESS CS
050.5161.--		4	ACCESS CS
061.7650.ZC		1	19.G. ...
052.5316.--		2	ACCESS CS
061.7704.--		1	19.G.016
052.5316.--		3	ACCESS CS
061.7040.--		1	ACCESS CS
061.6976.XX		1	ACCESS CS
081.9040.-- *		19G.F. ...	ACCESS CS
069.8503.04		1	19.G. ...
052.5316.--		4	ACCESS CS
080.9080.04		2xB + 4xH	19.G. ...
080.9124.SY		2xb + 2xh	ACCESS CS
065.6600.--		19.F. ...	ACCESS CS

- * Afhankelijk van de vleugelbreedte
- * En fonction de la largeur de l'ouvrant
- * Depending on vent width
- * Abhängig von der Flügelbreite



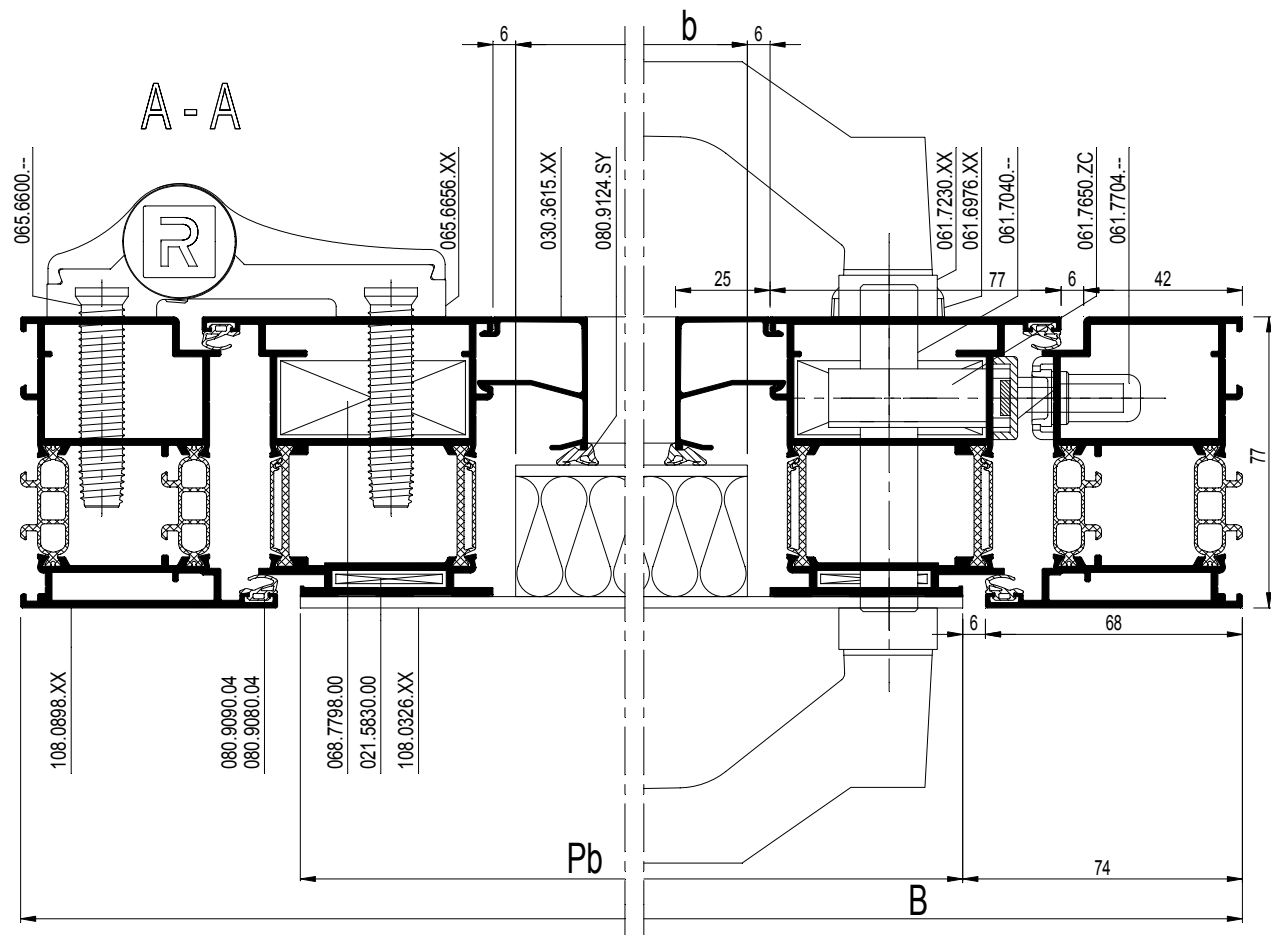
schaal - échelle
scale - Maßstab
1/2
D0083951



			#	L_m	
108.0898.XX (*)			1	B	19.C. ...
			1	H	
			1	H	
108.0326.XX			2	B - 96	19.C. ...
030.3615.XX			2	H - 61	19.C. ...
			2	H - 265	
108.0030.XX			1	B - 138	19.C. ...
108.0071.XX			1	B - 118	19.C. ...

* VARIANT/ VARIANTE/ VARIANT/VARIANTE

108.0899.XX			1	B	19.C. ...
			1	H	
			1	H	
108.0900.XX			1	B	19.C. ...
			1	H	
			1	H	



schaal - échelle
scale - Maßstab
1/2
D0083949

			#	
068.7794.00			2	19.G. ...
068.7798.00			4	19.G. ...
021.5830.00			4	19.G. ...
065.6656.XX			19.F...	ACCESS CS
061.7230.XX			1	ACCESS CS
050.5161.--			4	ACCESS CS
061.7650.ZC			1	19.G. ...
052.5316.--			2	ACCESS CS
061.7704.--			1	19.G.016
052.5316.--			3	ACCESS CS
061.7040.--			1	ACCESS CS
061.6976.XX			1	ACCESS CS
052.5310.--			1/300mm	ACCESS CS
069.8503.04			1	19.G. ...
052.5316.--			4	ACCESS CS
069.8509.04			1	19.G. ...
081.9141.04			B - 120	ACCESS CS
080.9080.04			2xB + 4xH	19.G. ...
081.9092.04			12 x (60 mm)	ACCESS CS
080.9124.SY			2xb + 2xh	ACCESS CS
065.6600.--			19.F...	ACCESS CS

INT.

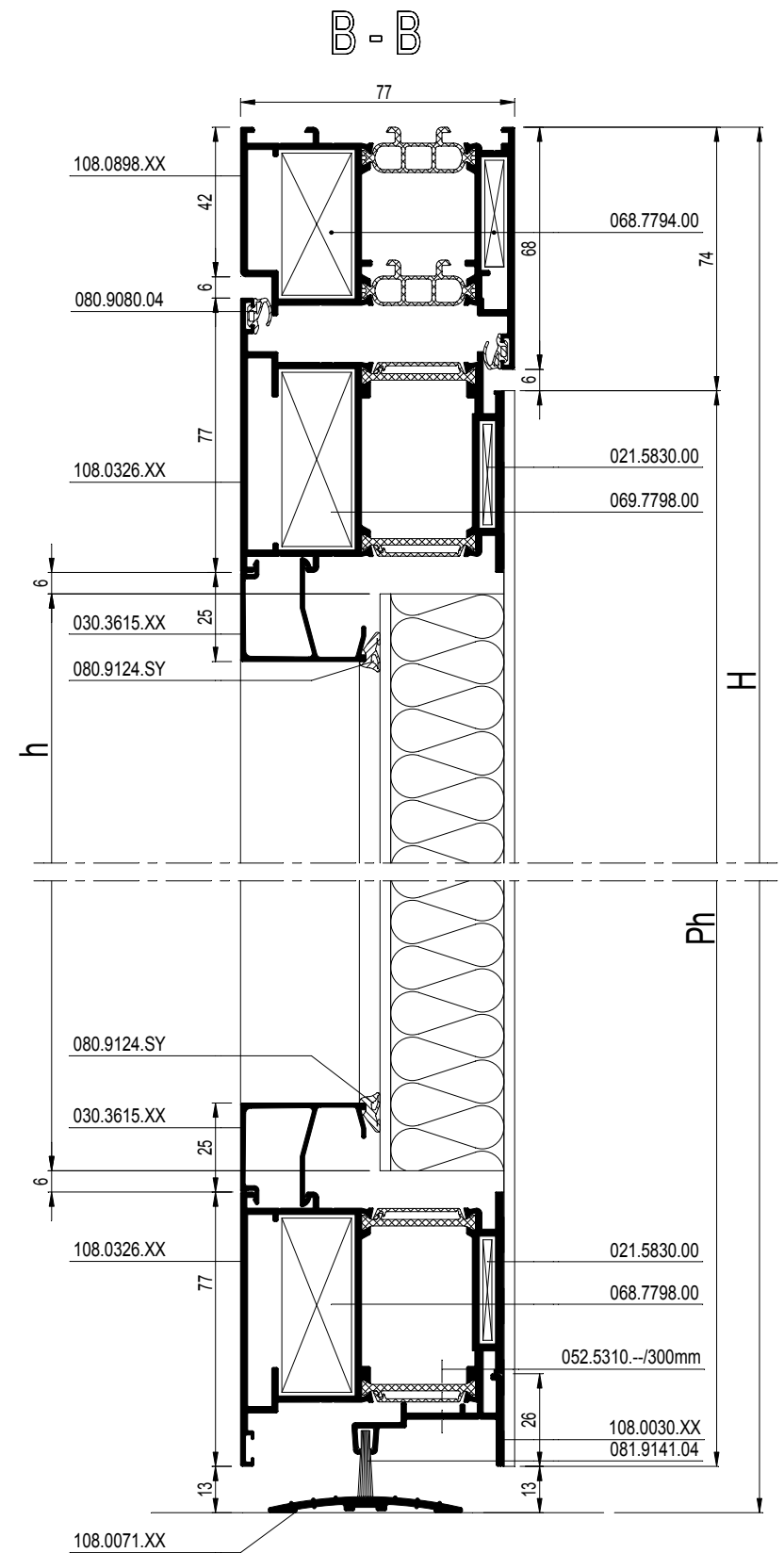
b = B - 262

h = H - 227

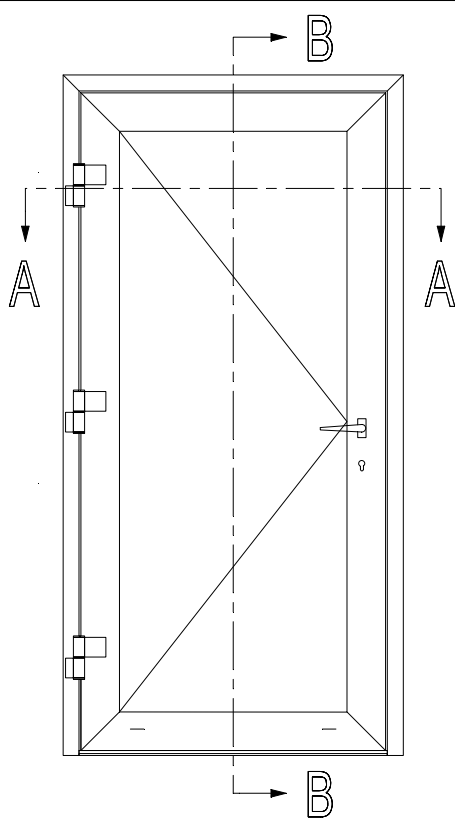
EXT.

Pb = B - 148

Ph = H - 87



schaal - échelle
scale - Maßstab
1/2
D0083949



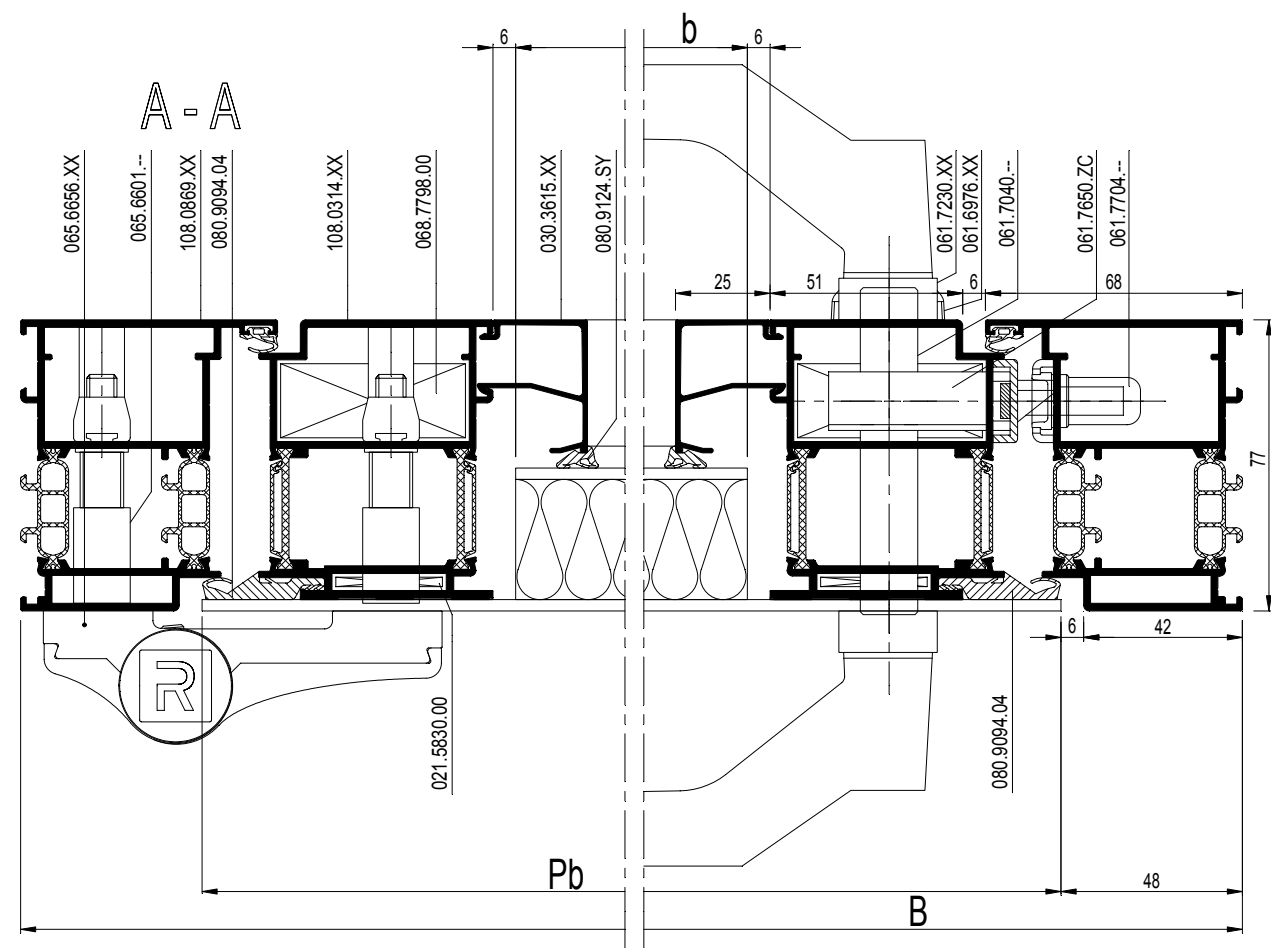
			#	← Lm →	
108.0869.XX			1	B	19.C. ...
			1	H	
			1	H	
108.0314.XX			2	B - 126	19.C. ...
			2	H - 88	
030.3615.XX			2	B - 250	19.C. ...
			2	H - 262	
108.0874.XX			1	B - 142	19.C. ...
108.0081.XX			1	B - 138	19.C. ...

INT.

	b = B - 262
	h = H - 224

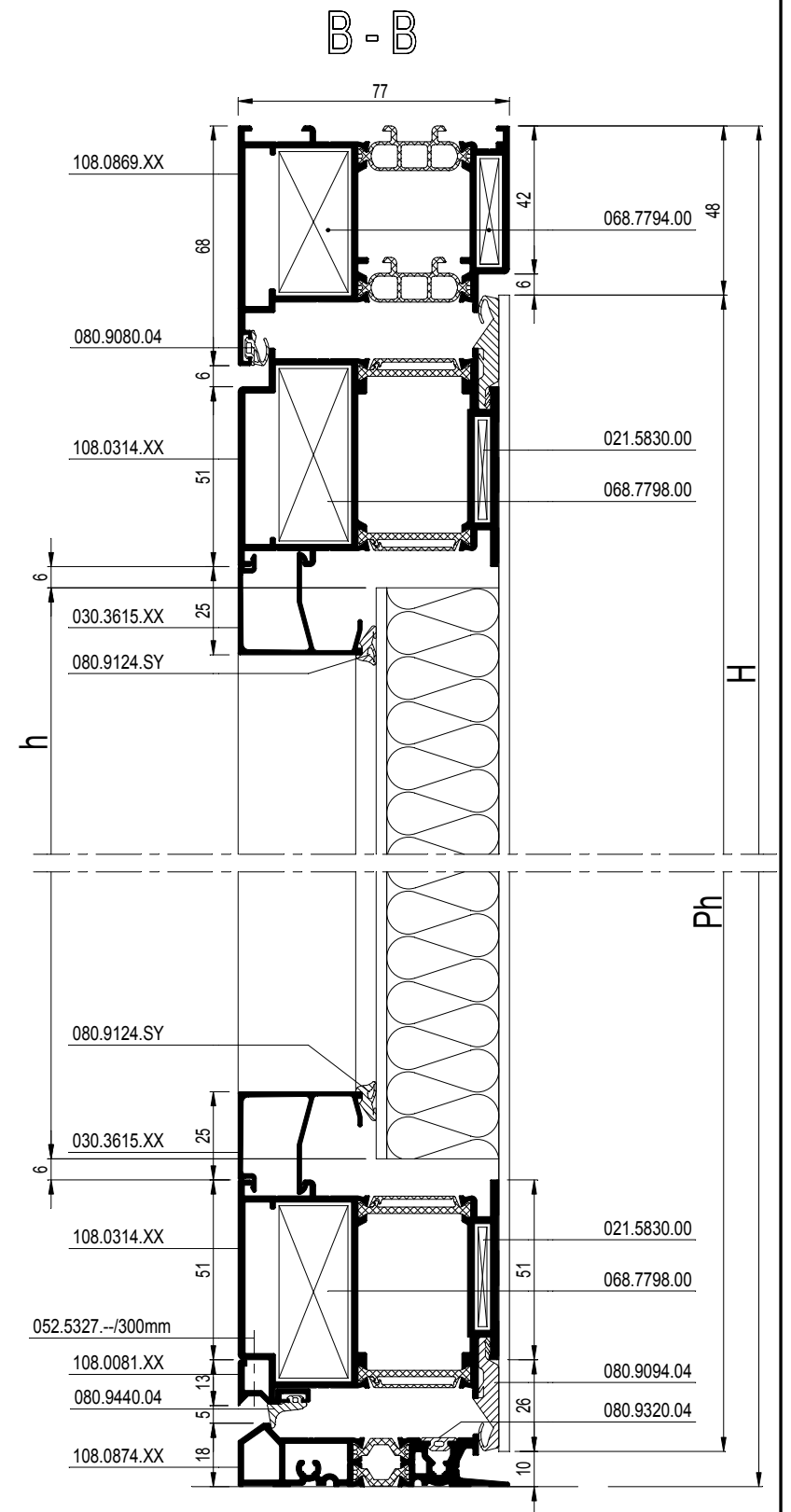
EXT.

	Pb = B - 96
	Ph = H - 58

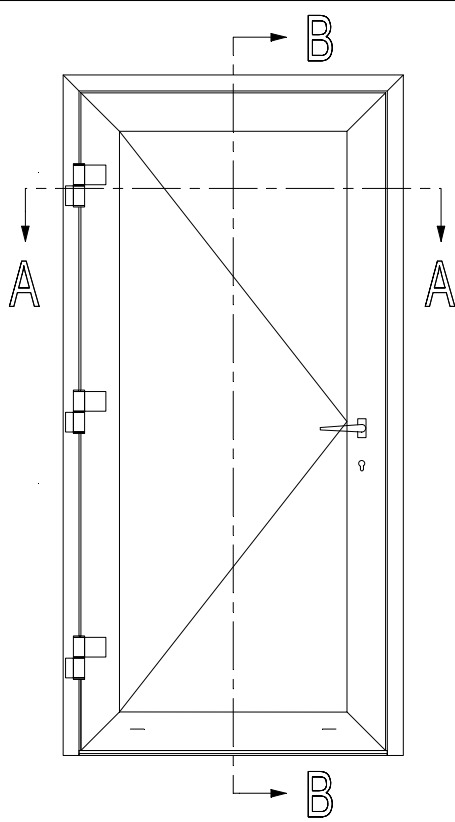


schaal - échelle
scale - Maßstab
1/2
D0083953

		#	
068.7794.00		2	19.G. ...
068.7798.00		4	19.G. ...
021.5830.00		4	19.G. ...
065.6656.XX		19.F. ...	ACCESS CS
061.7230.XX		1	ACCESS CS
050.5161.--		4	ACCESS CS
061.7650.ZC		1	19.G. ...
052.5316.--		2	ACCESS CS
061.7704.--		1	19.G.016
052.5316.--		3	ACCESS CS
061.7040.--		1	ACCESS CS
061.6976.XX		1	ACCESS CS
069.8500.04		1	19.G. ...
052.5313.--		4	ACCESS CS
052.5316.--		4	ACCESS CS
069.8509.04		1	19.G. ...
080.9080.04		1xB + 2xH	19.G. ...
081.9092.04		8 x (60 mm)	ACCESS CS
080.9124.SY		2xb + 2xh	ACCESS CS
052.5327.--		1/300mm	ACCESS CS
080.9094.04		2xB + 2xH	19.G. ...
080.9320.04		B	19.G. ...
080.9440.04		B - 126	19.G. ...
065.6601.XX		19.F. ...	ACCESS CS



schaal - échelle
scale - Maßstab
1/2
D0083953



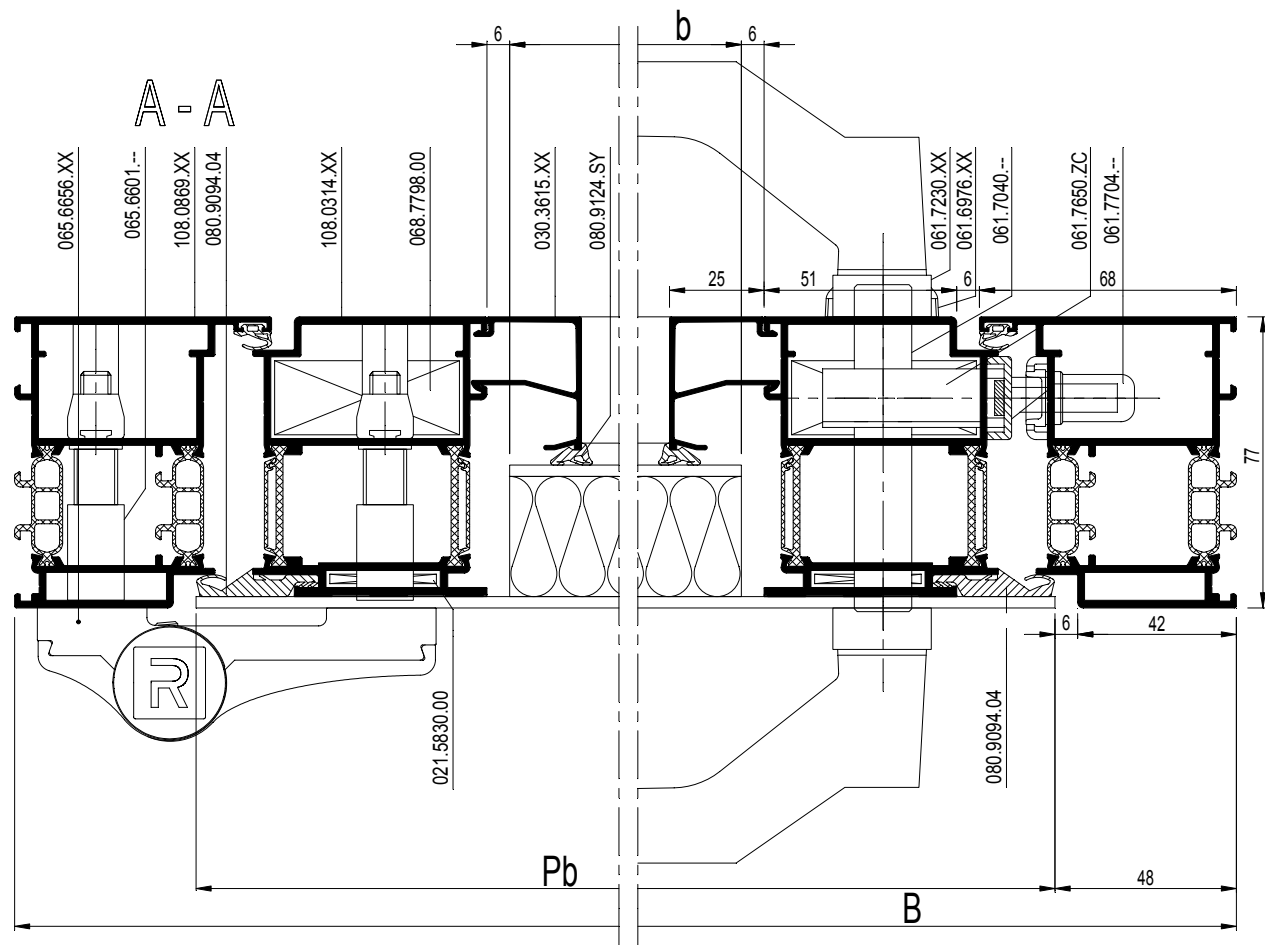
			#	← Lm →	
108.0869.XX			1	B	19.C. ...
			1	H	
			1	H	
108.0314.XX			2	B - 126	19.C. ...
			2	H - 88	
030.3615.XX			2	B - 250	19.C. ...
108.0071.XX			2	H - 262	19.C. ...
108.0082.XX			1	B - 118	19.C. ...
108.0082.XX			1	B - 138	19.C. ...

INT.

	b = B - 262
	h = H - 224

EXT.

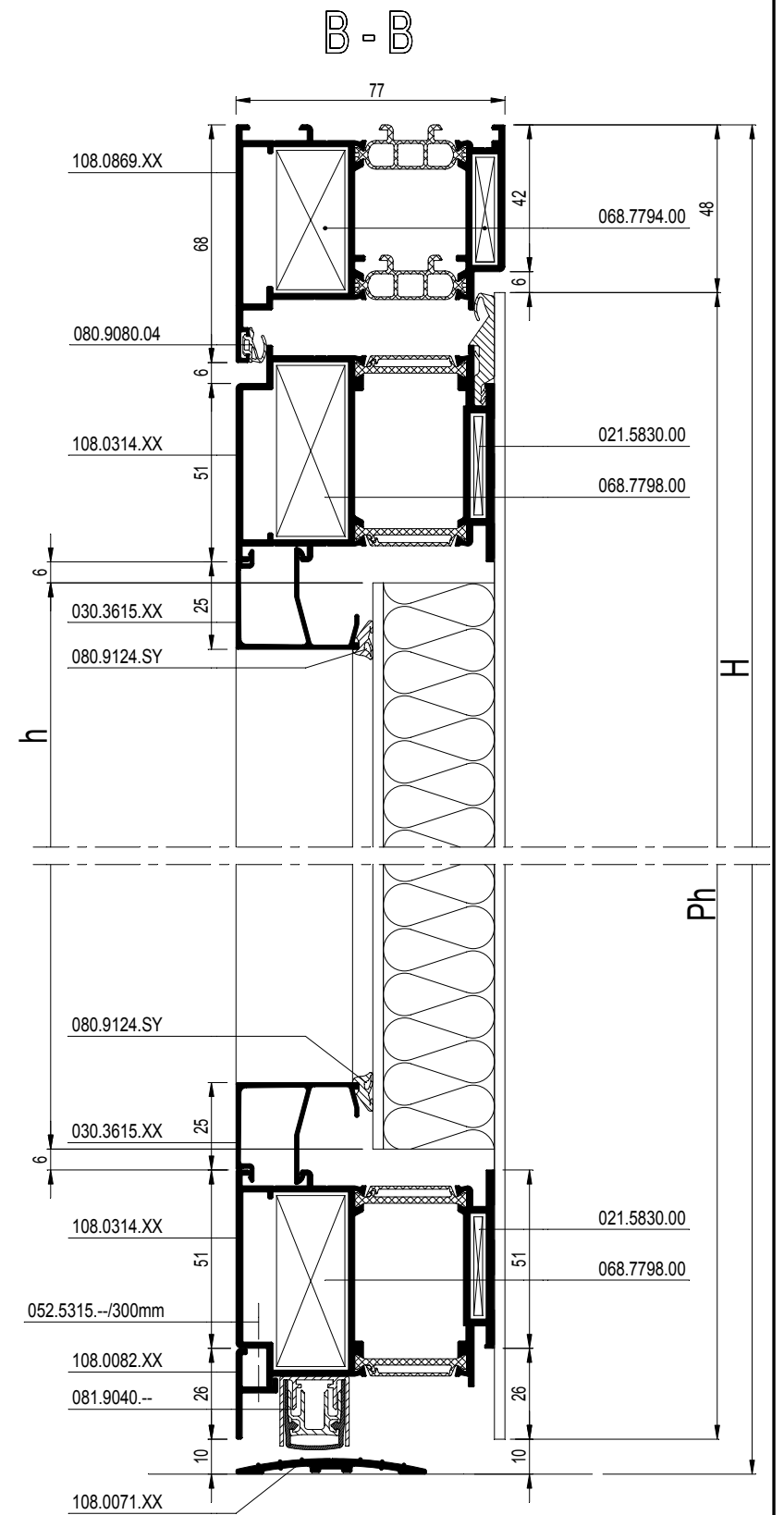
	Pb = B - 96
	Ph = H - 58



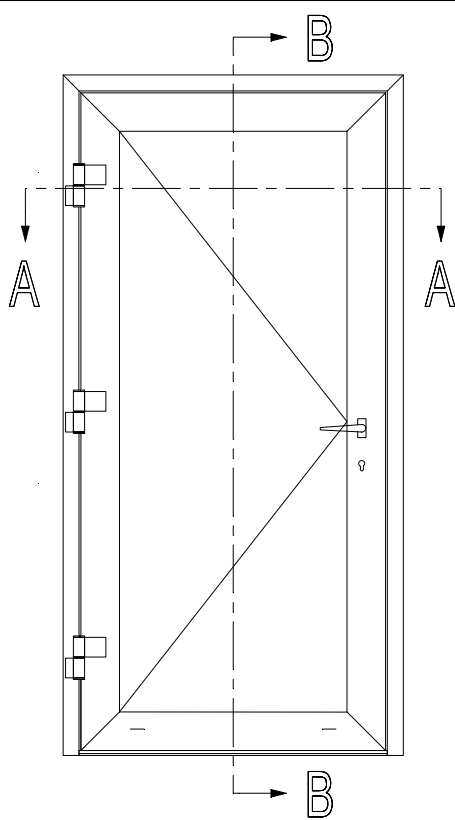
schaal - échelle
scale - Maßstab
1/2
D0083954

		#	
068.7794.00		2	19.G. ...
068.7798.00		4	19.G. ...
021.5830.00		4	19.G. ...
065.6656.XX		19.F. ...	ACCESS CS
061.7230.XX		1	ACCESS CS
050.5161.--		4	ACCESS CS
061.7650.ZC		1	19.G. ...
052.5316.--		2	ACCESS CS
061.7704.--		1	19.G.016
052.5316.--		3	ACCESS CS
061.7040.--		1	ACCESS CS
061.6976.XX		1	ACCESS CS
052.5315.--		1/300mm	ACCESS CS
069.8503.04		1	19.G. ...
052.5316.--		4	ACCESS CS
081.9040.-- *		19G.F. ...	ACCESS CS
080.9080.04		1xB + 2xH	19.G. ...
080.9124.SY		2xb + 2xh	ACCESS CS
080.9094.04		1xB + 2xH	19.G. ...
065.6601.--		19.F. ...	ACCESS CS

- * Afhankelijk van de vleugelbreedte
- * En fonction de la largeur de l'ouvrant
- * Depending on vent width
- * Abhängig von der Flügelbreite



schaal - échelle
scale - Maßstab
1/2
D0083954



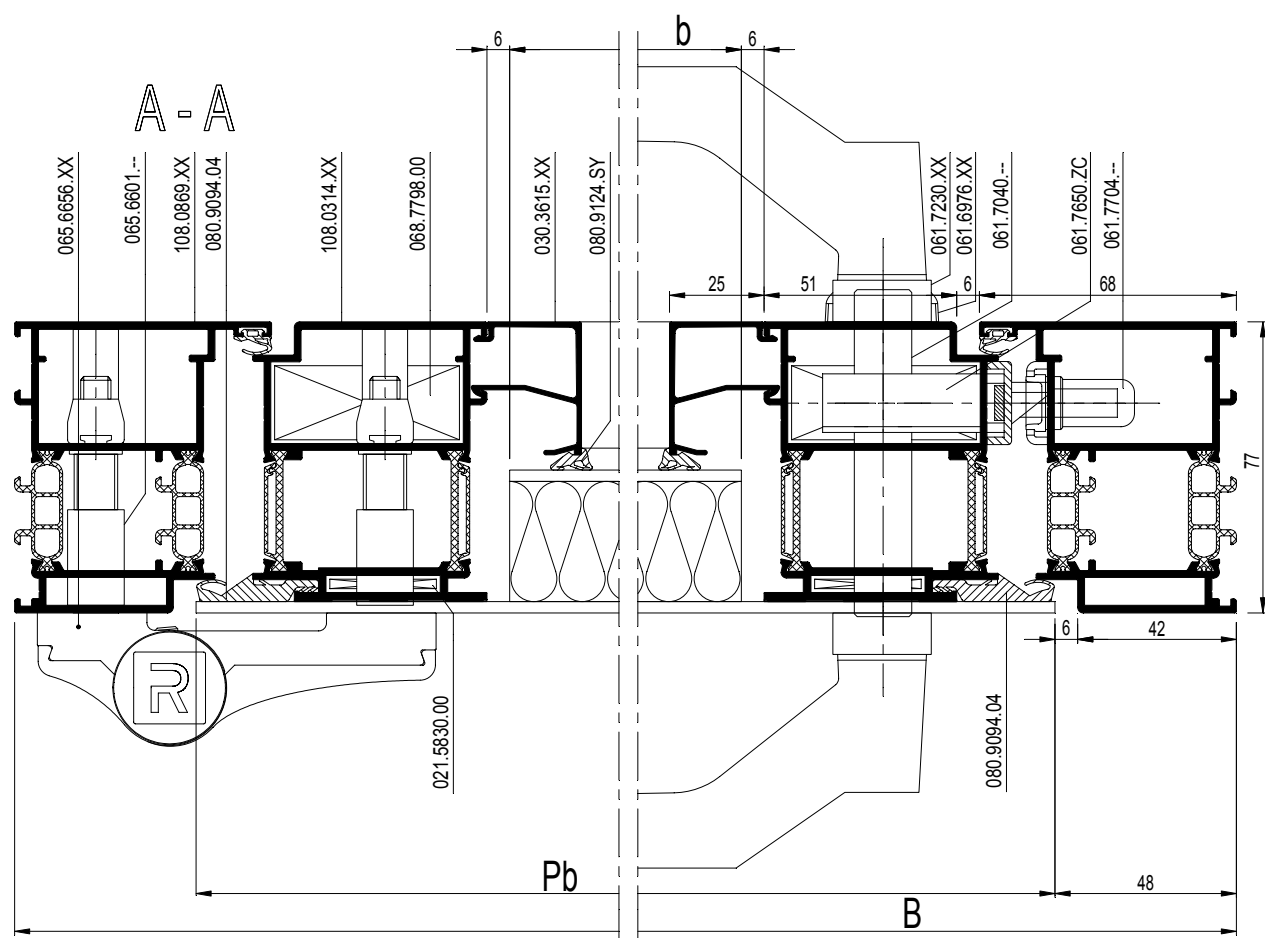
Icon	Icon	Icon	#	→ Lm	Icon
108.0869.XX	[Icon]	[Icon]	1	B	19.C. ...
		[Icon]	1	H	
		[Icon]	1	H	
108.0314.XX	[Icon]	[Icon]	2	B - 126	19.C. ...
		[Icon]	2	H - 91	
030.3615.XX	[Icon]	[Icon]	2	B - 250	19.C. ...
		[Icon]	2	H - 265	
108.0071.XX	[Icon]	[Icon]	1	B - 118	19.C. ...
108.0030.XX	[Icon]	[Icon]	1	B - 138	19.C. ...

INT.

[Icon]	b = B - 262
[Icon]	h = H - 227

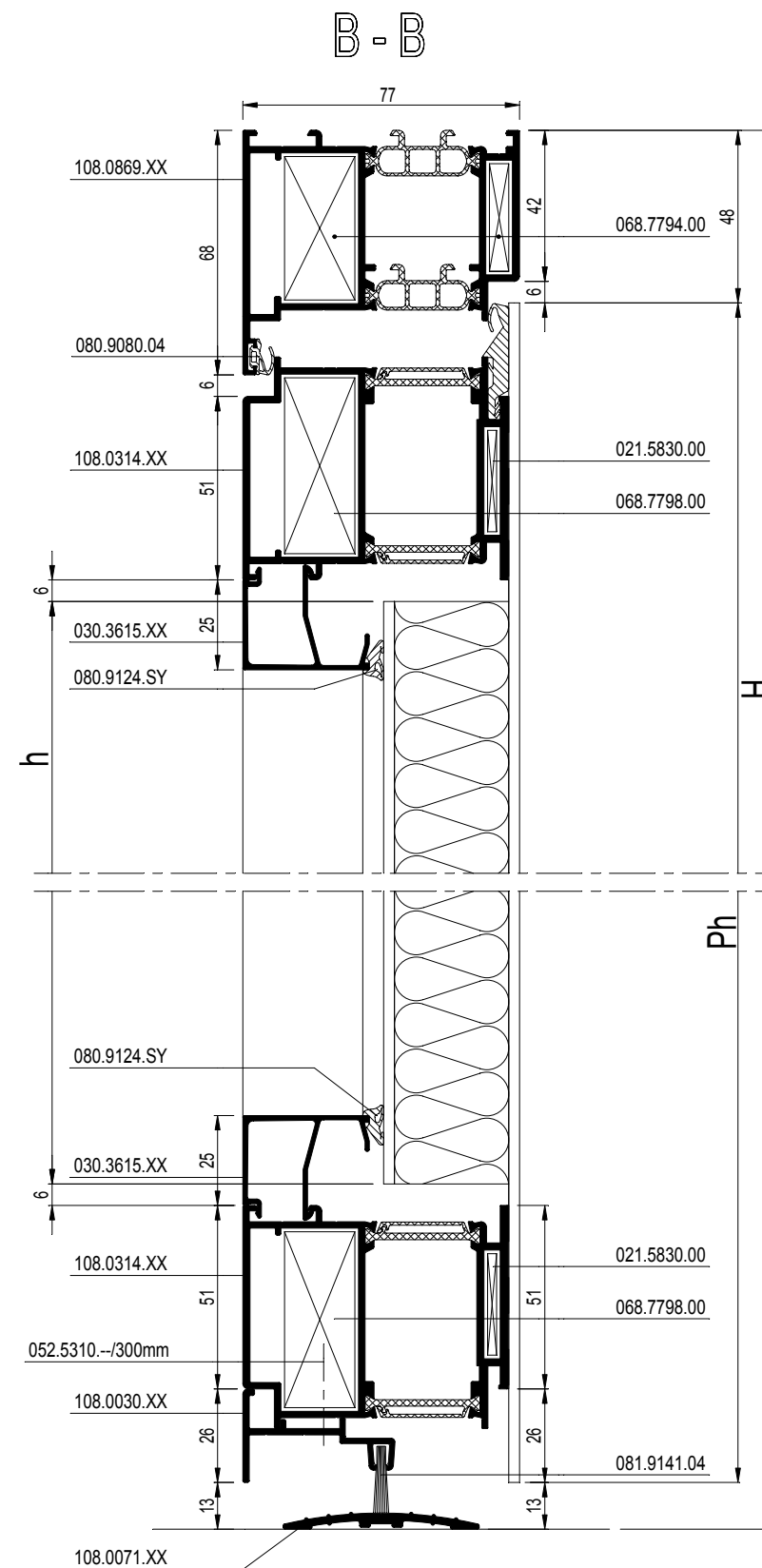
EXT.

[Icon]	Pb = B - 96
[Icon]	Ph = H - 61



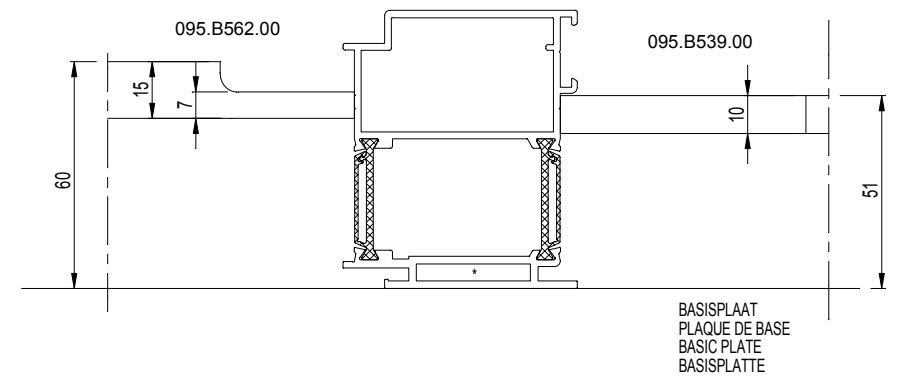
schaal - échelle
scale - Maßstab
1/2
D0083952

Icon	Icon	#	Icon
068.7794.00	[Icon]	2	19.G. ...
068.7798.00	[Icon]	4	19.G. ...
021.5830.00	[Icon]	4	19.G. ...
065.6656.XX	[Icon]	19.F. ...	ACCESS CS
061.7230.XX	[Icon]	1	ACCESS CS
050.5161.--	[Icon]	4	ACCESS CS
061.7650.ZC	[Icon]	1	19.G. ...
052.5316.--	[Icon]	2	ACCESS CS
061.7704.--	[Icon]	1	19.G.016
052.5316.--	[Icon]	3	ACCESS CS
061.7040.--	[Icon]	1	ACCESS CS
061.6976.XX	[Icon]	1	ACCESS CS
052.5310.--	[Icon]	1/300mm	ACCESS CS
069.8503.04	[Icon]	1	19.G. ...
052.5316.--	[Icon]	4	ACCESS CS
069.8509.04	[Icon]	1	19.G. ...
052.5316.--	[Icon]	4	ACCESS CS
081.9141.04	[Icon]	B - 120	ACCESS CS
080.9080.04	[Icon]	1xB + 2xH	19.G. ...
081.9092.04	[Icon]	12 x (60 mm)	ACCESS CS
080.9124.SY	[Icon]	2xb + 2xh	ACCESS CS
080.9094.04	[Icon]	1xB + 2xH	19.G. ...
065.6601.--	[Icon]	19.F. ...	ACCESS CS



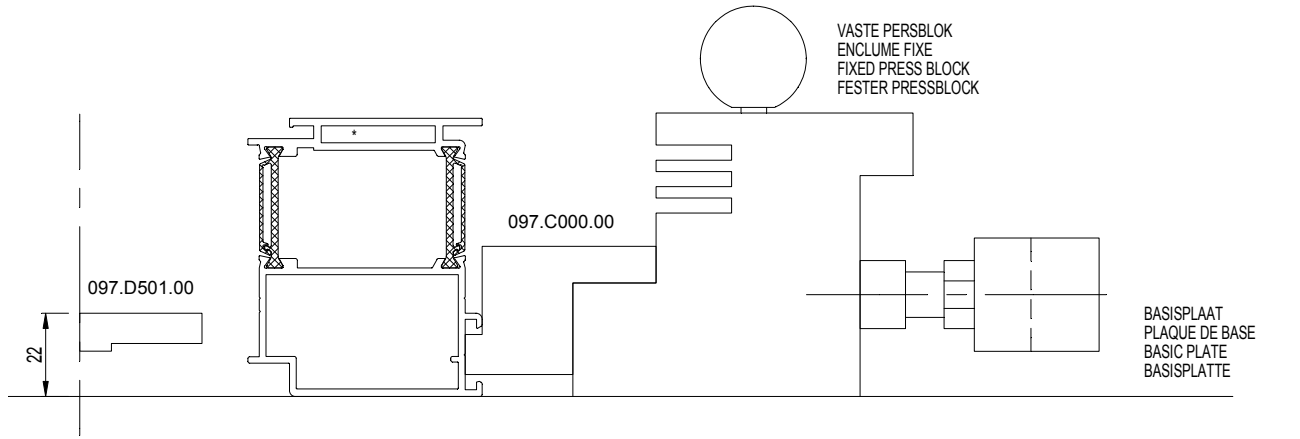
schaal - échelle
scale - Maßstab
1/2
D0083952

108.0314.XX
108.0326.XX




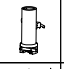
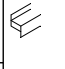

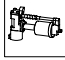

- * HOEK 021.5830.00 VERLIJMEN
- * COLLER EQUERRE 021.5830.00
- * CORNER 021.5830.00 TO GLUE
- * ECKWINKEL 021.5830.00 VERKLEBEN

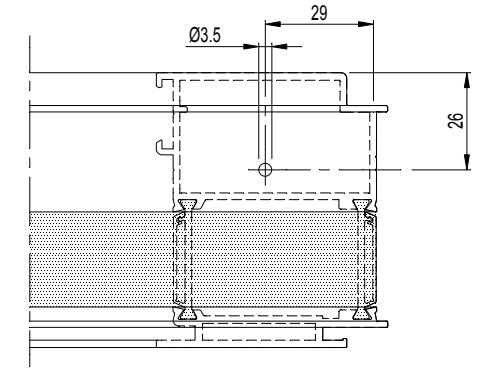
108.0314.XX
108.0326.XX

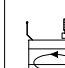
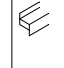


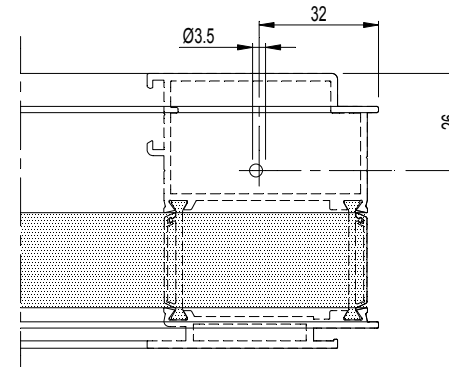
* HOEK 021.5830.00 VERLIJMEN
* COLLER EQUERRE 021.5830.00
* CORNER 021.5830.00 TO GLUE
* ECKWINKEL 021.5830.00 VERKLEBEN

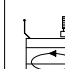
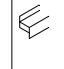
LIJMINJECTIE NA PERSEN
 INJECTION DE COLLE APRES LE SERTISSAGE
 GLUE INJECTION AFTER CRIMPING
 KLEBEINJEKTION NACH DEM PRESSEN

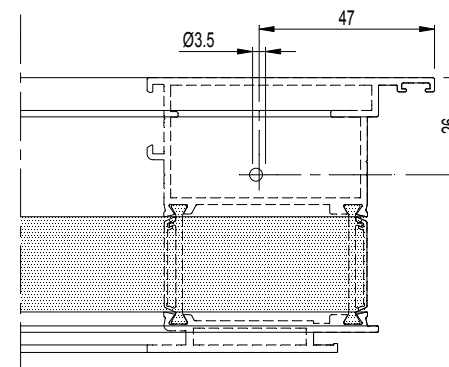
	095.C500.00		095.C600.00		108.0314.XX 108.0326.XX
			097.P400.00		
	095.C700.00		097.P400.00		


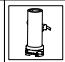


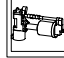



	SBZ 122		108.0314.XX
---	---------	---	-------------

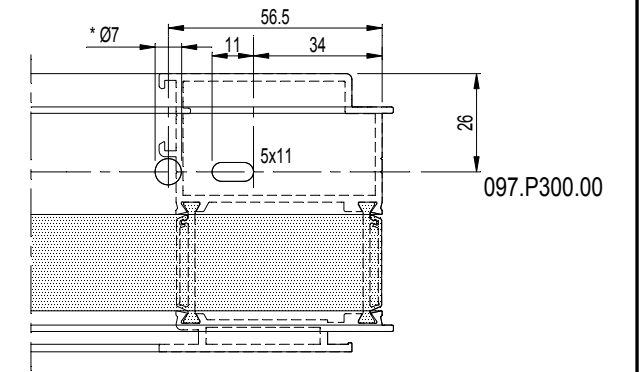


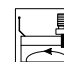
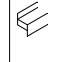
	SBZ 122		108.0326.XX
---	---------	---	-------------

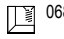


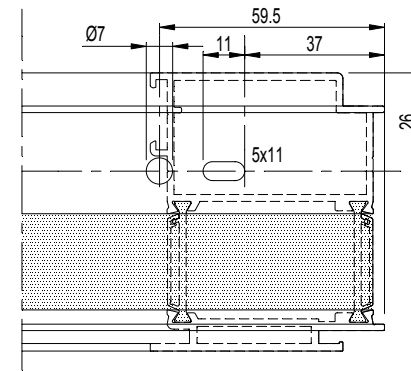
	095.C500.00		095.C600.00	 108.0314.XX 108.0326.XX
			097.P300.00	
	095.C700.00		097.P300.00	



 068.8818.00

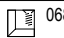


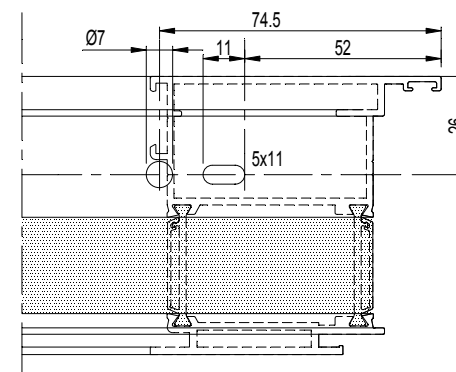
	SBZ 122		108.0314.XX
---	---------	---	-------------

 068.8818.00



	SBZ 122		108.0326.XX
---	---------	---	-------------

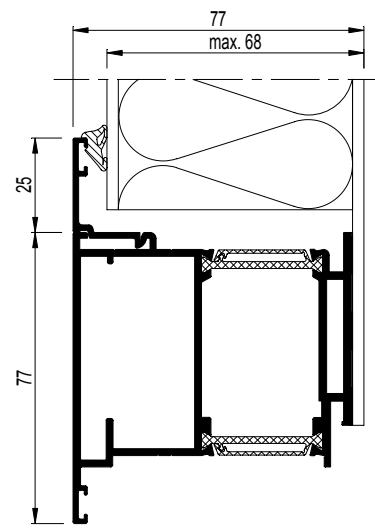
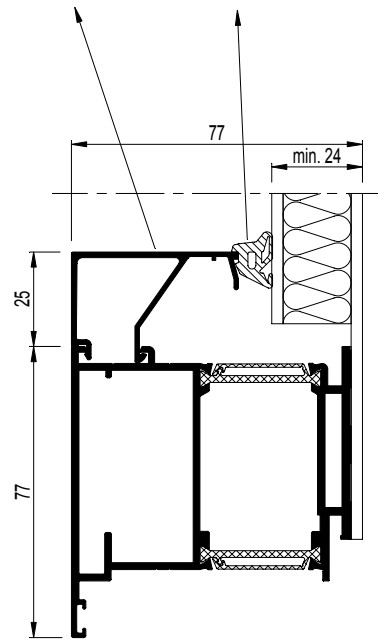
 068.8818.00



Buitenkader
Dormant

Outer frame
Blenrahmen

Glaslat Parclose Glazing bead Glasleiste	Beglazingsrubber binnen Joint de vitrage intérieur Glazing gasket inside Verglasungsdichtung innen	Paneeldikte Epaisseur de panneau Panel thickness Paneeldicke
030.3618.XX	080.9128.SY	24 + 25
030.3618.XX	080.9126.SY	26 + 27
030.3618.XX	080.9125.SY	28
030.3617.XX	080.9126.SY	29 + 30
030.3617.XX	080.9125.SY	31
030.3616.XX	080.9126.SY	32 + 33
030.3616.XX	080.9125.SY	34
030.3615.XX	080.9126.SY	35 + 36
030.3615.XX	080.9125.SY	37
030.3614.XX	080.9126.SY	38+39
030.3614.XX	080.9125.SY	40
030.3613.XX	080.9126.SY	41 + 42
030.3613.XX	080.9125.SY	43
030.3612.XX	080.9126.SY	44 + 45
030.3612.XX	080.9125.SY	46
030.3611.XX	080.9126.SY	47 + 48
030.3611.XX	080.9125.SY	49
030.3610.XX	080.9126.SY	50 + 51
030.3610.XX	080.9125.SY	52
030.3609.XX	080.9126.SY	53 + 54
030.3609.XX	080.9125.SY	55
030.3608.XX	080.9126.SY	56 + 57
030.3608.XX	080.9125.SY	58
030.3607.XX	080.9126.SY	59 + 60
030.3607.XX	080.9125.SY	61
030.3606.XX	080.9126.SY	62 + 63
030.3606.XX	080.9125.SY	64
030.3200.XX	080.9128.SY	65
030.3200.XX	080.9126.SY	66
030.3200.XX	080.9126.SY	67
030.3200.XX	080.9125.SY	68



D0083955

D0083955